



There when you need us most

FC SERIES CENTRIFUGAL PUMPS

Stainless Steel Centrifugal Pumps

FC Series

Dependable and rugged, FC Series pumps are corrosion and erosion resistant making them the logical choice for continuous duty service.

The quality and performance you expect, along with industry best lead times and personalized service, only from Webtrol!



Features and Benefits

- 304 stainless steel pump
- Close coupled design
- Centerline discharge
- Back pullout design allows for ease of servicing
- High operating efficiencies
- Mechanical seals and case o-rings are made of high quality materials

Performance

HP Range: 1 to 30 HP, 60Hz

Capacities to 600 GPM

Pressures to 120 PSI

Temperatures to 212° F

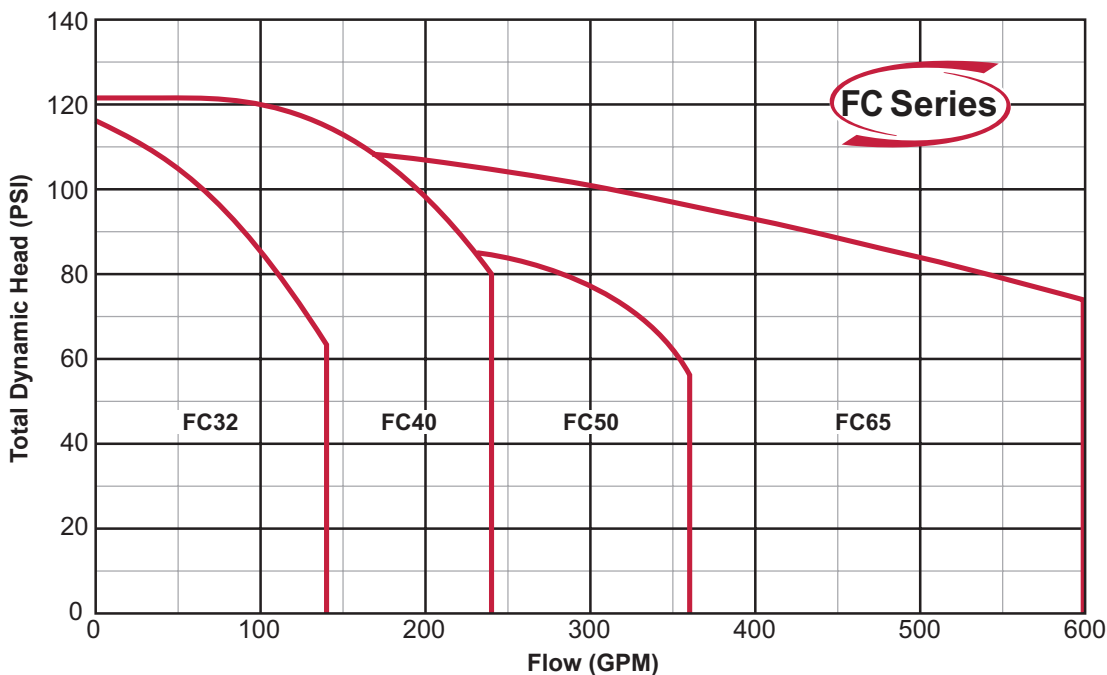
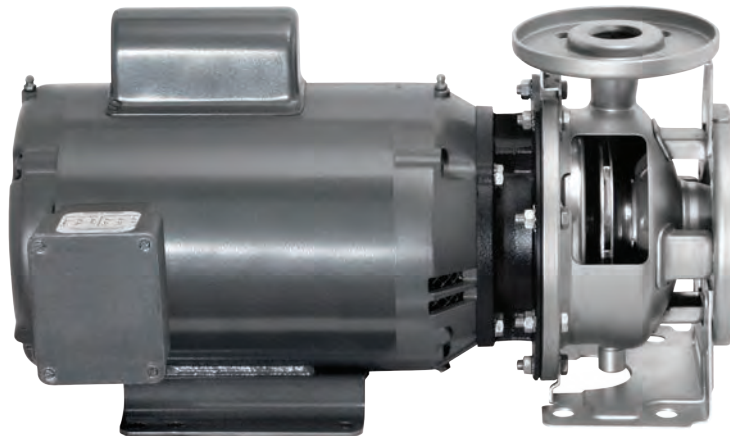
Typical Services

- Pressure Boosting
- Ultrapure Water Systems
- Deionized Systems
- Distribution Systems
- Pharmaceutical Services
- Water Reclamation
- Sprinkler & Irrigation
- General Pump Applications
- Beverage Processing
- Parts Washers
- Cooling Towers
- Jockey Pump
- Liquid Transfer
- Heat Exchangers
- Car Wash
- Spray systems
- Scrubbers
- Poultry



There when you need us most

FC SERIES CENTRIFUGAL PUMPS



CONSTRUCTION MATERIALS	
Part	Material
Casing	304 SS
Impeller	304 SS
Shaft	Stainless
Mechanical Seal	Carbon/Ceramic Viton