



There when you need us most

## TC SERIES CENTRIFUGAL PUMPS

### Stainless Steel Centrifugal Pumps

#### **TC** Series

The rugged TC Series pumps are corrosion and erosion resistant making them a dependable choice for continuous duty service.

The quality and performance you expect, along with industry best lead times and personalized service, only from Webtrol!



#### **Features and Benefits**

---

- 304 stainless steel pump
- Close coupled design
- Centerline discharge
- Back pullout design allows for ease of servicing
- High operating efficiencies
- Mechanical seals and case o-rings are made of high quality materials

#### **Performance**

---

HP Range: .5 to 3 HP, 60Hz

Capacities to 100 GPM

Pressures to 63 PSI

Temperatures to 212° F

#### **Typical Services**

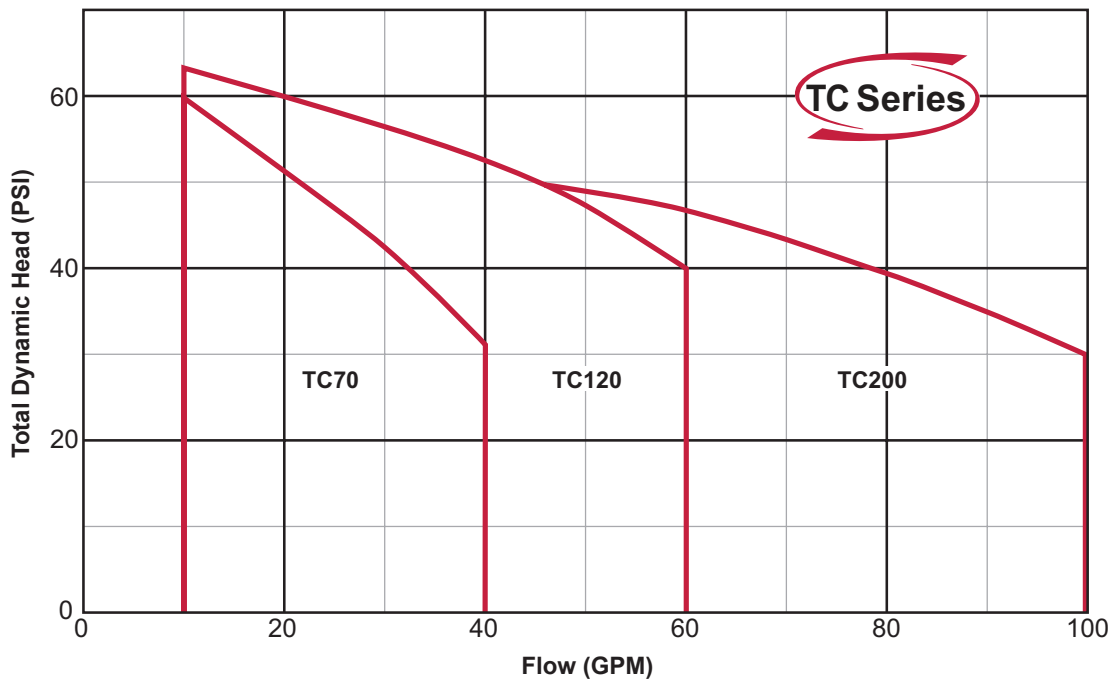
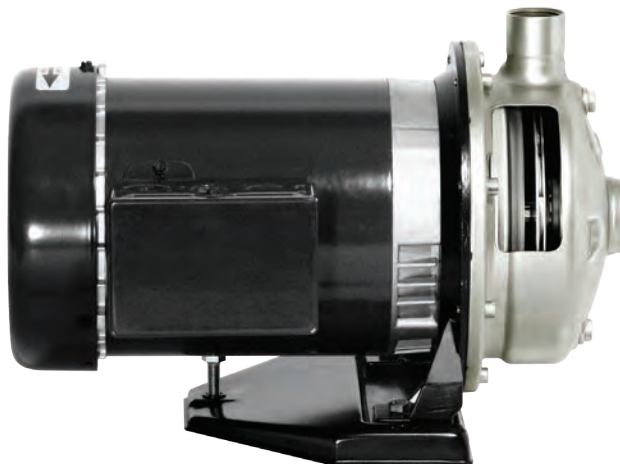
---

- Pressure Boosting
- Ultrapure Water Systems
- Deionized Systems
- Distribution Systems
- Pharmaceutical Services
- Water Reclamation
- Sprinkler & Irrigation
- General Pump Applications
- Beverage Processing
- Parts Washers
- Cooling Towers
- Jockey Pump
- Liquid Transfer
- Heat Exchangers
- Car Wash
- Spray systems
- Scrubbers
- Poultry



There when you need us most

# TC SERIES CENTRIFUGAL PUMPS



CONSTRUCTION MATERIALS	
Part	Material
Casing	304 SS
Impeller	304 SS
Shaft	Stainless
Mechanical Seal	Carbon/Ceramic Viton