



Part Number	Description	LIST PRICE
Pipe Holder	Description	List Price
35X113-M	Cast iron construction. When placed on top of well casing, will support 1" through 2" drop pipe while removing and installing a submersible pump.	\$ 388.41



Steel Pipe Elevators	Pipe Size	List Price
35X1100-M	1"	POR
35X1125-M	1 1/4"	POR
35X1150-M	1 1/2"	POR
35X1200-M	2	POR



Pitless Units	Description	List Price
None	Customized units for state approved wells. Units attach to well casing and contain an underground connection to discharge pipe. The unit seals by using o-rings on an internal spool that drops into place through the riser pipe of the unit. The o-rings are not exposed to ground water, thus eliminating the possibility of contamination. Available in well casing sizes from 6" to 30". Unit attaches to well casing by threading, welding or compression coupling. Discharge can be threaded or flanged.	POR



Brass Pitless Adapters	Description / Discharge Pipe Size / Supports (lbs.)	List Price
72S181-M	Baker model 1BT mini / 1" FPT / 1,500	\$ 107.52
72S181-MP	Baker model 1BPT mini pressurized / 1" FPT / 1,500	POR
72S182-M	Baker model 100BT	\$ 134.91
72S177-M	Campbell model B-10X	\$ 156.49
72S174-M	Campbell model B300X	\$ 122.05
72S173-M	Campbell model BA-10X 1/2" NPT acc. port	\$ 201.58
72S175-M	Campbell model S-50 heavy duty	POR
72S171-M	Campbell model BP-10X pressurized	POR
72S209-M	Simmons model 1840	\$ 99.82
72S209-MP	Simmons model 1841 pressurized	POR
72S169-MP	Maass Midwest model LDS-10-P pressurized	\$ 138.67
72S183-M	Baker model 125BT	\$ 176.93
72S183-MP	Baker model 125BPT pressurized	POR
72S179-M	Campbell model B-20X	\$ 214.19
72S172-M	Campbell model BP-20X pressurized	POR
72S180-M	Campbell model S-70X	\$ 676.08
72S177-OR	Campbell model B-10X replacement o-ring	\$ 2.12
72S209-OR	Simmons model 1840 replacement o-ring	\$ 6.00



Maass Midwest Weld On Pitless Adapters

	Description / Discharge Pipe Size / Supports (lbs.)	List Price
72S187-M	Model 6J1-1/4 / 1 1/4" FPT / 1 1/4" MPT / 5,000	POR
72S188-M	Model 6J1-1/2 / 1 1/2" FPT / 1 1/2" MPT / 5,000	POR
72S186-M	Model 6J2 / 2" FPT / 2" MPT / 6,000	POR
72S189-M	Model 8J3 / 3" FPT / 3" MPT / 10,000	POR



Torque Arrestors

	Description / Pipe Size	List Price
72S204-M	1" to 1 1/4"	\$ 14.00
72S208-M	American Granby torque arrestor / 1" to 1 1/4"	\$ 11.69



Cable/Wire Guards

	Description / Pipe Size	List Price
72S194-M	Slips onto discharge pipe above coupling / 1" or 1 1/4"	\$ 1.53
72S193-M	Attached to discharge pipe with electrical tape / 1"	\$ 3.74
72S192-M	Cable Guard for Flat Cable	\$ 1.41



Rope

	Description / Size	List Price
72S198-M	Braided polypropylene rope / 1/4" x 1000'	\$ 62.77
72S197-M	Braided polypropylene rope / 1/4" x 3000'	\$ 185.17



Cast Iron Water Tight Vented Well Caps

	Description / Conduit Connection (FPT) / Well Casing O.D.	List Price
72S212-M	Cast iron / 1" / 6 5/8"	\$ 65.60
72S211-M	Campbell model WTC6 / 1" / 6 5/8"	POR



ABS Plastic Water Tight Vented Well Caps

	Description / Conduit Connection (FPT) / Well Casing O.D.	List Price
72S230-M	American Granby model WTC6 / 1 1/4" / 6 5/8"	\$ 63.67
72S231-M	Campbell model WTC6P / 1 1/4" / 6 5/8"	POR



Aluminum Water Tight Vented Well Caps

	Description / Conduit Connection (FPT) / Well Casing O.D.	List Price
72S221-M	1 1/4" / 5 9/16"	\$ 100.54
72S213-M	American Granby / 1 1/4" / 6 5/8"	\$ 105.43
72S215-M	1" / 6 5/8"	\$ 97.54
72S214-M	MAASS Midwest model WTCC6.6 / 1 1/4" / 7"	\$ 122.49
72S219-M	1 1/4" / 8 5/8"	\$ 128.43



Vented Well Caps	Description / Conduit Connection (Socket) / Well Casing O.D.	List Price
72S200-M	Cast iron / 3/4" / 4 1/2"	\$ 14.40
72S210-M	Cast iron / 1" / 6 5/8"	\$ 25.85
72S225-M	Aluminum / 1" / 5 9/16"	\$ 19.94
72S226-M	Aluminum / 1" / 6 5/8"	POR
72S217-M	Aluminum / 1" / 7"	\$ 63.14
72S218-M	Aluminum / 1" / 8 5/8"	POR



Cast Iron Well Seals	Description / Well Casing I.D. / Wire Hole Size (FPT) / Vent Hole Size (FPT) / Drop Pipe Size (FPT)	List Price
72S100-M	4" / 1/2" / 1/4" / 1"	\$ 35.05
72S101-M	4" / 1/2" / 1/4" / 1 1/4"	\$ 30.45
72S127-M	4" / 1/2" / 1/4" / 1 1/2"	\$ 30.45
72S104-M	4" / 1/2" / 1/4" / 2"	\$ 30.45
72S109-M	5" / 3/4" / 1/2" / 1"	\$ 43.38
72S117-M	5 5/8" / 3/4" / 1/2" / 1"	POR
72S118-M	5 5/8" / 3/4" / 1/2" / 1 1/4"	POR
72S119-M	5 5/8" / 3/4" / 1/2" / 1 1/2"	POR
72S121-M	6" / 3/4" / 1/2" / 1"	\$ 56.58
72S120-M	Simmons / 6" / 3/4" / 1/2" / 1"	\$ 48.62
72S122-M	6" / 3/4" / 1/2" / 1 1/4"	\$ 56.58
72S123-M	6" / 3/4" / 1/2" / 1 1/2"	POR
72S150-M	6" / 3/4" / 1/2" / 2"	\$ 56.58
72S149-M	6" / 3/4" / 1/2" / 2 1/2"	POR
72B125-M	6 1/4" / 3/4" / 1/2" / Blank	POR
72S124-M	Simmons / 6 1/4" / 3/4" / 1/2" / 1"	\$ 71.69
72S125-M	6 1/4" / 3/4" / 1/2" / 1"	\$ 59.60
72S126-M	6 1/4" / 3/4" / 1/2" / 1 1/4"	\$ 59.60
72S128-M	6 1/4" / 3/4" / 1/2" / 1 1/2"	POR
72S129-M	6 1/4" / 3/4" / 1/2" / 2"	\$ 103.57
72S131-M	6 5/8" / 3/4" / 1/2" / 1"	\$ 143.05



Simmons Steel Heavy Duty Well Seals	Max Load (Lbs.) / Well Casing I.D. / Wire Hole Size (FPT) / Vent Hole Size (FPT) / Drop Pipe Size (FPT)	List Price
72S141-M	1,100 / 6" / 1" / 1/2" / 1 1/2"	POR
72S151-M	1,100 / 6" / 1" / 1/2" / 2"	POR
72S152-M	9,000 / 6" / 1" / 1/2" / 3"	POR
72S153-M	1,100 / 6 1/4" / 1" / 1/2" / 2"	POR
72S154-M	9,000 / 6 1/4" / 1" / 1/2" / 3"	POR
72S156-M	6,900 / 8" / 1" / 1/2" / 2"	POR



Simmons Steel Heavy Duty Well Seals (continued)	Max Load (Lbs.) / Well Casing I.D. / Wire Hole Size (FPT) / Vent Hole Size (FPT) / Drop Pipe Size (FPT)	List Price
72S157-M	12,000 / 8" / 1" / 1/2" / 3"	POR
72S158-M	27,000 / 8" / 1" / 1/2" / 4"	POR
72S160-M	16,500 / 10" / 1" / 1/2" / 3"	POR
72S161-M	16,500 / 10" / 1" / 1/2" / 4"	POR
72S162-M	32,000 / 10" / 1" / 1/2" / 5"	POR
72S163-M	34,000 / 10" / 1" / 1/2" / 6"	POR



Cast Iron Jet Pump Well Seals	Well Casing I.D. / Vent Hole Size (FPT) / Drop Pipe Size (FPT)	List Price
72J104-M	6" / 1/2" / 1 1/4" x 1"	\$ 56.58
72J105-M	6" / 1/2" / 1 1/4" x 1"	\$ 59.60



ABS Plastic Well Seals	Well Casing I.D. / Wire Hole Size (FPT) / Vent Hole Size (FPT) / Drop Pipe Size (FPT)	List Price
72B100-ABS	4" / 3/4" / 1/2" / Blank	POR
72S100-ABS	4" / 3/4" / 1/2" / 1"	\$ 26.89
72S101-ABS	4" / 3/4" / 1/2" / 1 1/4"	\$ 26.89
72S127-ABS	4" / 3/4" / 1/2" / 1 1/2"	POR
72S104-ABS	4" / 3/4" / 1/2" / 2"	POR
72S105-ABS	4 1/2" / 3/4" / 1/2" / 1"	\$ 29.87
72S106-ABS	4 1/2" / 3/4" / 1/2" / 1 1/4"	\$ 29.87
72B109-ABS	5" / 3/4" / 1/2" / Blank	POR
72S109-ABS	5" / 3/4" / 1/2" / 1"	\$ 40.68
72B121-ABS	6" / 3/4" / 1/2" / Blank	POR
72S121-ABS	6" / 3/4" / 1/2" / 1"	\$ 43.55
72S122-ABS	6" / 3/4" / 1/2" / 1 1/4"	\$ 37.73
72S123-ABS	6" / 3/4" / 1/2" / 1 1/2"	POR
72S150-ABS	6" / 3/4" / 1/2" / 2"	POR
72B125-ABS	6 1/4" / 3/4" / 1/2" / Blank	POR
72S125-ABS	6 1/4" / 3/4" / 1/2" / 1"	\$ 38.74
72S126-ABS	6 1/4" / 3/4" / 1/2" / 1 1/4"	\$ 40.68
72S128-ABS	6 1/4" / 3/4" / 1/2" / 1 1/2"	POR
72S129-ABS	6 1/4" / 3/4" / 1/2" / 2"	POR



Well Seal Vents	Description	List Price
72S164-M	1/2" MPT x 5" long PVC slotted nipple.	\$ 2.94
72S165-M	1/2" MPT galvanized 90 degree street elbow with screen.	\$ 6.20



PVC Schedule 40 Pressure Pipe	Description / Size	List Price
35X105-9	Belled one end, 20' lengths / 3/4"	\$ 0.59
35X104-9	Belled one end, 20' lengths / 1"	\$ 0.76
35X1041-9	Belled one end, 20' lengths / 1 1/4"	\$ 1.15
35X1042-9	Belled one end, 20' lengths / 1 1/2"	\$ 1.09
35X1043-9	Belled one end, 20' lengths / 2"	\$ 1.49



PVC Schedule 80 Drop Pipe

	Description / Size (MPT)		List Price
35X100-9	Threaded both ends, 20' lengths / 1"	\$	1.08
35X102-9	Threaded both ends, 20' lengths / 1 1/4"	\$	1.48
35X106-9	Threaded both ends, 20' lengths / 1 1/2"	\$	1.76
35X108-9	Threaded both ends, 20' lengths / 2"	\$	2.43



PVC Pipe/Well Casing & Liner

	Description / Size		List Price
35P4026-9P	SDR 26 belled one end, 20' lengths / 4"	\$	3.50
35P4040-9P	Schedule 40 belled one end, 20' lengths / 4"	\$	4.70
35P4526-9P	SDR 26 belled one end, 20' lengths / 4 1/2"	\$	4.21
35P4540-9P	Schedule 40 belled one end, 20' lengths / 4 1/2"	\$	5.43
35P6026-9P	SDR 26 belled one end, 20' lengths / 6"	\$	7.58
35P6040-9P	Schedule 40 belled one end, 20' lengths / 6"	\$	8.29
35P6121-9P	SDR 21 belled one end, 20' lengths / 6 1/8"	\$	10.07
35P6227-9P	DR 27.6 belled one end, 20' lengths 6 1/4"	\$	7.75



Titeloc PVC (Glueless) Well Casing & Liner

	Description / Size		List Price
35P4040-9L	Schedule 40 belled one end, 20' lengths / 4"		POR
35P4540-9L	Schedule 40 belled one end, 20' lengths / 4 1/2"		POR
35P6021-9L	SDR 21 belled one end, 20' lengths / 6"		POR
35P6040-9L	Schedule 40 belled one end, 20' lengths / 6"		POR
35P6121-9L	SDR 21 belled one end, 20' lengths / 6 1/8"		POR



Fittings For PVC Well Casing & Liner

	Description / Size		List Price
35X494-9	Schedule 40 spigot plug / 4"	\$	15.38
35X540-9	Schedule 40 slip coupling / 4"	\$	9.65
35X040-9	Schedule 40 long bell slip coupling / 4"	\$	18.31
35X544-9	Schedule 40 slip cap / 4"	\$	9.08
35X484-9	Schedule 40 slip reducer coupling / 4" x 2"	\$	25.92
35X496-9	Schedule 40 slip plug / 6"	\$	26.15
35X547-9	Schedule 40 slip coupling / 6"	\$	21.11
35X546-9	Schedule 40 slip cap / 6"	\$	21.78
35X486-9	Schedule 40 slip reducer coupling / 6" X 4"	\$	41.29
35S762-9	SDR 27.6 slip cap / 6 1/4"	\$	58.00



Pump Screens	Description	List Price
85X4410-6	SS 4" dia. x 4' long 100 mesh	\$ 405.26

Well Screens	Description	List Price
85X210-9	PVC 2" dia. x 10' long, .010" slot	POR
85X410-9	PVC 4" dia. x 10' long, .010" slot	POR
85X610-9	PVC 6" dia. x 10' long, .010" slot	POR



Debris Traps / Formation Packers	Description	List Price
72S409-M	Fits 4" pipe for wells up to 7" I.D.	\$ 29.95
72S407-M	Fits 5" pipe for wells up to 7" I.D.	\$ 32.89
72S408-M	Fits 6" pipe for wells up to 8" I.D.	\$ 80.01
72S410-M	Fits 6" pipe for wells up to 10" I.D.	\$ 49.34



Grout & Drilling Materials (Bentonite)	Description	List Price
#8 Grout	Enviroplug #8 Grout (50 Lb bags)	POR
Drilling Mud	High Yield Drilling Mud (50 Lb bags)	POR
EP-COARSE	Enviroplug Coarse (50 Lb bags)	POR
EP-GROUT	Enviroplug Grout (50 Lb bags)	POR
EP-MEDIUM	Enviroplug Medium (50 Lb bags)	POR
W-V5 POLYMER	WYO-VIS Polymer (5 Gal)	POR
WYO-FOAMER	WYO-Foamer (5 Gal)	POR





Polyethylene Roll Pipe

	Description / Size		List Price
35R075-1	100 PSI, 100' lengths / 3/4" IPS	\$	40.56
35R075-4	100 PSI, 400' lengths / 3/4" IPS	\$	162.13
35R0725-1	125 PSI, 100' lengths / 3/4" IPS	\$	47.57
35R0725-4	100 PSI, 400' lengths / 3/4" IPS	\$	190.29
35R175-1	160 PSI, 100' lengths / 3/4" IPS	\$	63.41
35R175-4	160 PSI, 400' lengths / 3/4" IPS	\$	253.65
35R100-1	100 PSI, 100' lengths / 1" IPS	\$	59.23
35R100-3	100 PSI, 300' lengths / 1" IPS	\$	178.48
35R125-1	125 PSI, 100' lengths / 1" IPS	\$	73.95
35R125-3	125 PSI, 300' lengths / 1" IPS	\$	221.84
35R160-1	160 PSI, 100' lengths / 1" IPS	\$	95.92
35R160-3	160 PSI, 300' lengths / 1" IPS	\$	287.70
35R200-1	200 PSI, 100' lengths / 1" IPS	\$	126.91
35R200-3	200 PSI, 300' lengths / 1" IPS	\$	380.72
35R1210-1	100 PSI, 100' lengths / 1 1/4" IPS	\$	102.21
35R1210-3	100 PSI, 300' lengths / 1 1/4" IPS	\$	306.64
35R1260-1	160 PSI, 100' lengths / 1 1/4" IPS	\$	170.21
35R1260-3	160 PSI, 300' lengths / 1 1/4" IPS	\$	510.64



Blue Poly Roll Pipe

	Description / Size		List Price
35R2075-1	200 PSI, 100' lengths / 3/4" CTS	\$	53.60
35R2100-1	200 PSI, 100' lengths / 1" CTS	\$	87.92
35R2125-1	200 PSI, 100' lengths / 1 1/4" CTS	\$	132.19
36R275-1	200 PSI, 100' lengths / 3/4" IPS	\$	81.09
36R275-4	200 PSI, 400' lengths / 3/4" IPS	\$	355.84
36R200-1	200 PSI, 100' lengths / 1" IPS	\$	126.91
36R200-3	200 PSI, 300' lengths / 1" IPS	\$	380.72
36R1220-1	200 PSI, 100' lengths / 1 1/4" IPS	\$	232.64
36R1220-3	200 PSI, 300' lengths / 1 1/4" IPS	\$	697.92



Perma Tank

	Outlet Size / Drawdown @ 30/50 PSI (Gal.) / Tank Vol. (Gal.)		List Price
73PIL5	3/4" MPT / 1.4 / 4.6	\$	298.80
73PAD20	1" FPT / 6.2 / 20	\$	425.13
73PAD32	1" FPT / 9.6 / 32	\$	724.87
73PAD36S	1" FPT / 11.2 / 36	\$	775.83
73PAD52	1 1/4" FPT / 16.1 / 52	\$	884.97

Platinum Tank	Outlet Size / Drawdown @ 30/50 PSI (Gal.) / Tank Vol. (Gal.)	List Price
73SBD20	1" FPT / 6.2 / 20	\$ 446.43
73SBD32	1" FPT / 9.6 / 32	\$ 761.03
73SBD36S	1" FPT / 11.2 / 36	\$ 814.90
73SBD52	1 1/4" FPT / 16.1 / 52	\$ 915.87
73SBD86	1 1/4" FPT / 26.7 / 86	\$ 1,351.23
73SBD96	1 1/4" FPT / 29.8 / 96	\$ 1,402.03
73SBD119	1 1/4" FPT / 37.0 / 119.5	\$ 2,017.73



Platinum Plus Tank	Outlet Size / Drawdown @ 30/50 PSI (Gal.) / Tank Vol. (Gal.)	List Price
73PSD20	1" FPT / 6.2 / 20	\$ 491.07
73PSD32	1" FPT / 6.6 / 32	\$ 837.23
73PSD36S	1" FPT / 11.2 / 36	\$ 896.40
73PSD52	1 1/4" FPT / 16.1 / 52	\$ 1,007.47
73PSD86	1 1/4" FPT / 26.7 / 86	\$ 1,486.37
73PSD119	1 1/4" FPT / 37.0 / 119.5	\$ 2,093.90

Champion Precharged Tanks	Description / Outlet Size / Drawdown @ 30/50 PSI (Gal.) / Tank Vol. (Gal.)	List Price
73XD42-M	CH4202 / 1" FPT / 6.8 / 20	\$ 545.57
73XD60-M	CH6000 / 1" FPT / 8.8 / 26	\$ 572.07
73XD82-M	CH8003 / 1" FPT / 10.9 / 32	\$ 778.67
73XD85-M	CH8205 / 1 1/4" FPT / 11.6 / 34	\$ 830.42
73XD120-M	CH10050 / 1 1/4" FPT / 15.0 / 44	\$ 1,188.62
73XD160-M	CH12051 / 1 1/4" FPT / 21.1 / 62	\$ 1,348.86
73XD255-M	CH17255 / 1 1/4" FPT / 27.5 / 81	\$ 1,402.96
73XD220-M	CH17002 / 1 1/4" FPT / 29.2 / 86	\$ 1,455.38
73XD350-M	CH22050 / 1 1/4" FPT / 40.5 / 119	\$ 2,201.96



Value Well Precharged Tanks	Description / Outlet Size / Drawdown @ 30/50 PSI (Gal.) / Tank Vol. (Gal.)	List Price
73VW20-M	VW-20 / 1" FPT / 6.8 / 20	\$ 518.79
73VW32-M	VW-32 / 1" FPT / 10.9 / 32	\$ 701.87
73VW34-M	VW-34 / 1 1/4" FPT / 11.6 / 34	\$ 747.98
73VW44-M	VW-44 / 1 1/4" FPT / 15.0 / 44	\$ 1,086.41
73VW62-M	VW-62 / 1 1/4" FPT / 21.1 / 62	\$ 1,216.56
73VW86-M	VW-86 / 1 1/4" FPT / 29.2 / 86	\$ 1,309.25
73VW119-M	VW-119 / 1 1/4" FPT / 40.5 / 119	\$ 1,980.88





Well-X-Trol Precharged Tanks With Ultra Tuf-Kote

	Description / Outlet Size / Drawdown @ 30/50 PSI (Gal.) / Tank Vol. (Gal.)	List Price
73WX101-M	WX-101 / 3/4" MPT / .7 / 2	\$ 177.15
73WX102-M	WX-102 / 3/4" MPT / 1.5 / 4.4	\$ 240.00
73WX103-M	WX-103 / 3/4" MPT / 2.6 / 8.6	\$ 391.58
73WX104-M	WX-104 / 1" FPT / 3.5 / 10.3	\$ 435.07
73WX200-M	WX-200 / 1" FPT / 4.8 / 14	\$ 461.75
73WX201-M	WX-201 / 1" FPT / 4.8 / 14	\$ 536.00
73WX202-M	WX-202 / 1" FPT / 6.8 / 20	\$ 557.16
73WX202-MP	WX-202 Pro Access / 1" FPT / 6.8 / 20	\$ 591.13
73WX202H-M	WX-202H horizontal / 1" FPT / 6.8 / 20	\$ 988.39
73WX202XL-M	WX-202XL / 1" FPT / 8.8 / 26	\$ 613.27
73WX202XL-MP	WX-202XL Pro Access / 1" FPT / 8.8 / 26	\$ 657.64
73WX203-M	WX-203 / 1" FPT / 10.9 / 32	\$ 895.01
73WX203-MP	WX-203 Pro Access / 1" FPT / 10.9 / 32	\$ 963.76
73WX205-M	WX-205 / 1 1/4" FPT / 11.6 / 34	\$ 1,086.39
73WX205-MP	WX-205 Pro Access / 1 1/4" FPT / 11.6 / 34	\$ 1,109.09
73WX250-M	WX-250 / 1 1/4" FPT / 15.0 / 44	\$ 1,136.74
73WX250-MP	WX-250 Pro Access / 1 1/4" FPT / 15.0 / 44	\$ 1,219.07
73WX251-M	WX-251 / 1 1/4" FPT / 21.1 / 62	\$ 1,343.79
73WX251-MP	WX-251 Pro Access / 1 1/4" FPT / 21.1 / 62	\$ 1,438.42
73WX255-M	WX-255 / 1 1/4" FPT / 27.5 / 81	\$ 1,442.23
73WX255-MP	WX-255 Pro Access / 1 1/4" FPT / 27.5 / 81	\$ 1,544.89
73WX302-M	WX-302 / 1 1/4" FPT / 29.2 / 86	\$ 1,593.21
73WX302-MP	WX-302 Pro Access / 1 1/4" FPT / 29.2 / 86	\$ 1,703.60
73WX252-M	WX-252 / 1 1/4" FPT / 29.2 / 86	\$ 1,914.80
73WX350-M	WX-350 / 1 1/4" FPT / 40.5 / 119	\$ 2,270.68
73WX350-MP	WX-350 Pro Access / 1 1/4" FPT / 40.5 / 119	\$ 2,425.63



Well-X-Trol Underground Precharged Tanks

	Description / Outlet Size / Drawdown @ 30/50 PSI (Gal.) / Tank Vol. (Gal.)	List Price
73WX200UG-M	WX-200-UG / 1" FPT / 4.8 / 14	\$ 657.77
73WX202UG-M	WX-202-UG / 1" FPT / 6.8 / 20	\$ 948.69
73WX250UG-M	WX-250-UG / 1 1/4" FPT / 15.0 / 44	\$ 1,839.43
73WX251UG-M	WX-201-UG / 1 1/4" FPT / 21.1 / 62	\$ 2,186.95



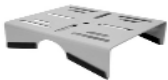
**Epoxy Coated Standard
(Non-Precharged)
Retention Tanks**

	Description / Inlet/Outlet Size / Tank Dimensions (Dia. x Height) / Tank Vol. (Gal.)		List Price
73X42TZ-MC	ERT42T / 1 1/4" FPT / 16" x 53" / 42	\$	533.31
73X42S-MSTD	EC42S / 1 1/4" FPT / 20" x 35.5" / 42	\$	456.13
73X42SZ-MC	ERT42S / 1 1/4" FPT / 20" x 35.5" / 42	\$	562.79
73X82Z-MC	ERT80 / 1 1/4" FPT / 20" x 64" / 80	\$	778.95
73X120Z-MC	ERT120 / 1 1/4" FPT / 24" x 66" / 120	\$	1,029.03
73X220Z-MC	ERT220 / 2" FPT / 30" x 77" / 220	\$	2,596.49
73X315Z-MC	ERT315 / 2" FPT / 36" x 78" / 315	\$	3,618.25



**Jet Pump Precharged
Tank**

	Description / Outlet Size / Drawdown @ 30/50 PSI (Gal.) / Tank Vol. (Gal.)		List Price
73WX202H-M	WX-202H horizontal / 1: FPT / 6.8 / 20	\$	757.31



**Jet Pump Tank Mounting
Bracket**

	Description		List Price
73X901-M	Installs on top of any vertical tank	\$	25.89
73X902-M	Installs on horizontal tank 73WX202H-M	\$	169.69



Brass Tank Tees		Description / Inlet & Outlet / Tank Connection	List Price
35X154-M		Compact with one 1/2" drain / 1" FPT / 1" FPT	\$ 16.24
35X174-M		Solid brass w/one 1/2" drain 11" long / 1" MPT x 3/4" FPT* / 1" MPT	\$ 39.20
35X169-M		Solid brass w/two 1/2" drains 11" long / 1" MPT x 3/4" FPT* / 1" MPT	\$ 39.67
35X153-M		Compact universal w/one 3/4" drain / 1" MPT x 3/4" FPT* / 1" FPT	\$ 90.55
35X173-M		Fabricated with one 1/2" drain 11" long / 1" MPT x 3/4" FPT* / 1" MPT	\$ 45.73
35X175-M		Fabricated w/two 1/2" drains 11" long / 1" MPT x 3/4" FPT* / 1" MPT	\$ 45.73
35X177-M		Fabricated breakaway union with o-ring & two 1/2" drains 11" long / 1" MPT x 3/4" FPT* / 1" MPT	POR
35X178-M		Solid brass w/union & two 1/2" drains 11" long / 1" MPT x 3/4" FPT* / 1" MPT	\$ 47.60
35X173-ML		Fabricated with one 1/2" drain 14" long / 1" MPT x 3/4" FPT* / 1" MPT	\$ 51.33
35X179-M		Breakaway union with o-ring & one 1/2" drain 4 1/2" long / 1" MPT x 3/4" FPT* / 1" FPT	POR
35X181-M		Fabricated w/union & two 1/2" drains 13" long / 1" MPT x 3/4" FPT* / 1" MPT	\$ 89.09
35X180-M		Elevated w/union & two 1/2" drains 18" long / 1" MPT x 3/4" FPT* / 1" MPT	POR
35X156-M		Compact with one 3/4" drain / 1 1/4" FPT / 1 1/4" FPT	POR
35X176-M		Fabricated with one 3/4" drain 14" long / 1 1/4" MPT x 1" FPT* / 1 1/4" MPT	\$ 64.40
35X182-M		Fabricated w/union & two 3/4" drains 16" long / 1 1/4" MPT x 1" FPT* / 1 1/4" MPT	\$ 124.77
Galvanized Tank Tees		Description / Inlet & Outlet / Tank Connection	List Price
35X115-M		Kit w/one 1/2" drain 11 1/2" long / 1" FPT / 1" MPT	POR
35X145-M		Kit w/one 1/2" drain 14 1/2" long / 1" FPT / 1" MPT	POR
35X171-M		W/one 1/2" drain 3 3/4" long / 1" FPT / 1" FPT	\$ 18.20
35X172-M		W/one 1/2" drain 4" long / 1 1/4" FPT / 1 1/4" FPT	\$ 20.48
35X215-M		Kit w/one 1/2" drain 15" long / 1 1/4" FPT / 1 1/4" MPT	POR

Tank Installation Packages

Description / Tank Connection

List Price



TANK FTG PKG	Package includes a universal compact brass tank tee, 1" x 10" Sch 80 PVC nipple, 1/4" x 4" galvanized nipple, Square D pressure switch 30-50 PSI, 2" 0-100 PSI pressure gauge and 1" brass check valve. / 1" MPT	\$	164.76
---------------------	--	----	--------

88X120-M	Package includes a 1" x 11" fabricated brass tank tee, 1/4" x 4" galvanized nipple, 1/2" boiler drain, Square D pressure switch 30-50 PSI, 2" 0-100 PSI pressure gauge and 1" brass check valve. / 1" MPT	\$	123.60
-----------------	---	----	--------



88X122-M	Package includes a universal compact brass tank tee, 1" x 10" Sch 80 PVC nipple, 1/4" x 4" galvanized nipple, 3/4" boiler drain, Square D pressure switch 30-50 PSI, 2" 0-100 PSI pressure gauge and 1" brass check valve. / 1" MPT		POR
-----------------	---	--	-----

TANK FTG PKG M4	Package includes a universal compact brass tank tee, 1" x 10" Sch 80 PVC nipple, 1/4" x 4" galvanized nipple, 3/4" pressure relief valve, Square D pressure switch 30-50 PSI with low pressure cut off, 2" 0-100 PSI pressure gauge and 1" brass check valve. / 1" MPT	\$	172.18
------------------------	--	----	--------

WI1	Package includes a 1" galvanized tank cross, 1" galvanized union, 1" brass ball valve, 2" 0-100 PSI pressure gauge, pressure switch 40-60 PSI, 1/2" pressure relief valve, 1" x 1" x 3/4" galvanized reducing tee, 3/4" brass boiler drain, 1/4" x 4" galvanized nipple, 1" x 10" galvanized nipple, 1" x 2 1/2" galvanized nipple, and 2 - 1" x close galvanized nipples. / 1" MPT	\$	132.91
------------	---	----	--------

WI11/4	Package includes a 1 1/4" galvanized tank cross, 1 1/4" galvanized union, 1 1/4" brass ball valve, 2" 0-100 PSI pressure gauge, pressure switch 40-60 PSI, 1/2" pressure relief valve, 1 1/4" x 1 1/4" x 3/4" galvanized reducing tee, 3/4" brass boiler drain, 1/4" x 4" galvanized nipple, 1 1/4" x 10" galvanized nipple, 1 1/4" x 3" galvanized nipple, and 2 - 1 1/4" x close galvanized nipples. / 1" MPT		POR
---------------	---	--	-----

Pressure Relief Valves

Description / Size (Inlet x Outlet)

List Price



78X100-M	Factory set at 75 PSI / 1/2" MPT x 1/2" FPT	\$	11.50
78X101-M	Factory set at 75 PSI / 3/4" MPT x 1/2" FPT	\$	11.96
78X102-M	Factory set at 65 PSI / 1" MPT x 1" FPT	\$	100.05
78X103-M	Factory set at 65 PSI / 1 1/4" x 1 1/4" FPT	\$	165.60



Pressure Gauges

	Description / Dial Size (Dia.)		List Price
81X100-MP	Plastic case 0-100 PSI / 2"	\$	6.97
81X100-M	Steel case 0-100 PSI / 2"	\$	8.33
81X101-M	Steel case 0-200 PSI / 2"	\$	7.32
81X105-M	Steel case liquid filled 0-100 PSI / 2"	\$	12.16
81X114-M	Steel case 0-400 PSI / 2"	\$	6.92
81X103-M	Steel case 0-100 PSI / 4"		POR
81X104-M	Steel case 0-200 PSI / 4"		POR
81X106-M	Stainless steel case liquid filled 0-200 PSI / 4"		POR



Drawdown/Water Level

Gauges (In Feet And Pressure)

Description / Dial Size (Dia.)

List Price

81X221-M	0-230 feet, 0-100 PSI / 4 1/2"	\$	43.04
81X222-M	0-460 feet, 0-200 PSI / 4 1/2"	\$	43.04
81X223-M	0-690 feet, 0-300 PSI / 4 1/2"	\$	43.04



Air Sniffer Valves

Size (MPT)

List Price

84X101-M	1/8"	\$	2.91
84X100-M	1/4"	\$	3.76



Air Volume Controls

Description / Size (MPT)

List Price

82X105-M	Brady plastic deep well / 1 1/4"	\$	39.39
82X103-M	Robertshaw plastic deep well / 1 1/4"	\$	42.66
82X101-M	Penn plastic deep well / 1 1/4"	\$	69.90



Bleeder Orifices

Description / Size (MPT)

List Price

83X100-M	Brass / 3/4"	\$	11.17
83X101-M	Rubber / 1"	\$	2.46



Noryl Plastic Check Valves

Description / Size

List Price

79X170-9AP	Solid / 1 1/4" MPT x 1" FPT		POR
79X171-9	Solid / 1 1/4" MPT x 1 1/4" FPT		POR





Stainless Steel Check Valves

	Description / Size		List Price
79X170-6	Solid / 1 1/4" MPT x 1" FPT	\$	53.48
79X171-6	Solid / 1 1/4" MPT x 1 1/4" FPT	\$	66.09
79X151-6	Solid / 1 1/2" FPT x 1 1/2" FPT	\$	100.65
79X132-6	Solid / 2" FPT x 2" FPT	\$	162.31
79X133-6	Solid / 3" FPT x 3" FPT	\$	902.00
79X137P-M	*With break-off plug / 4" FPT x 4" FPT	\$	1,911.60
79X138P-M	*With break-off plug / 6" FPT x 6" FPT	\$	4,555.72



Ductile Iron Check Valves




	Description / Size		List Price
79X132-M	Solid / 2" FPT x 2" FPT	\$	117.48
79X1325-M	Solid / 2 1/2" FPT x 2 1/2" FPT	\$	280.40
79X133-M	Solid / 3" FPT x 3" FPT	\$	397.54
79X133P-M	*With break-off plug / 3" FPT x 3" FPT	\$	501.35
79X134-M	Solid / 4" FPT x 4" FPT	\$	612.71
79X134P-M	*With break-off plug / 4" FPT x 4" FPT	\$	716.55
79X135P-M	*With break-off plug / 5" FPT x 5" FPT	\$	1,242.00
79X136P-M	*With break-off plug / 6" FPT x 6" FPT	\$	1,517.20




Break-Off Plugs - Stainless Steel

	Description		List Price
79X133-BO	For 3" check valve	\$	90.72
79X134-BO	For 4" check valve	\$	90.44
79X136-BO	For 5" - 6" check valve	\$	90.44

Brass Check Valves

	Description / Size		List Price
	79X148-M	Solid / 3/4" FPT x 3/4" FPT	\$ 35.91
	79X161-M	1/4" tap in outlet / 3/4" FPT x 3/4" FPT	POR
	79X103-M	1/8" tap in inlet, 1/4" tap in outlet / 3/4" FPT x 3/4" FPT	POR
	79X149-M	Solid / 1" FPT x 1" FPT	\$ 42.91
	79X153-M	Flomatic / 1" FPT x 1" FPT	\$ 44.86
	79X163-M	1/8" tap in inlet / 1" FPT x 1" FPT	POR
	79X162-M	1/4" tap in outlet / 1" FPT x 1" FPT	\$ 54.26
	79X100-M	1/8" tap in inlet, 1/4" tap in outlet / 1" FPT x 1" FPT	\$ 54.26
	79X104-M	1/4" tap in inlet, 1/4" tap in outlet / 1" FPT x 1" FPT	\$ 60.91
	79X155-M	Control center 1/8" tap in inlet, (2) 1/4" taps in outlet, 1/8" Tap in outlet & plug / 1" FPT x 1" FPT	POR
	79X156-M	(2) 1/4" taps in outlet / 1" FPT x 1" FPT	\$ 55.83
	79X150-M	Solid / 1 1/4" FPT x 1 1/4" FPT	\$ 54.62
	79X157-M	Flomatic / 1 1/4" FPT x 1 1/4" FPT	\$ 62.29
	79X111-M	1/8" tap in inlet / 1 1/4" FPT x 1 1/4" FPT	POR
	79X164-M	1/4" tap in outlet / 1 1/4" FPT x 1 1/4" FPT	\$ 70.09
	79X101-M	1/8" tap in inlet, 1/4" tap in outlet / 1 1/4" FPT x 1 1/4" FPT	\$ 70.09
		79X158-M	Control center 1/8" tap in inlet, (2) 1/4" taps in outlet, taps in outlet, 1/8" tap in outlet & plug / 1 1/4" FPT x 1 1/4" FPT
	70X170-M	Solid / 1 1/4" MPT x 1" FPT	\$ 41.09
	70X171-M	Solid / 1 1/4" MPT x 1 1/4" FPT	\$ 52.49
	79X151-M	Solid / 1 1/2" FPT x 1 1/2" FPT	\$ 75.26
	79X159-M	Flomatic / 1 1/2" FPT x 1 1/2" FPT	\$ 91.77
	79X102-M	1/4" tap in outlet / 1 1/2" FPT x 1 1/2" FPT	\$ 93.60
	79X106-M	1/8" tap in inlet, 1/4" tap in outlet / 1 1/2" FPT x 1 1/2" FPT	\$ 79.80
	79X152-M	Solid / 2" FPT x 2" FPT	\$ 114.60
	79X145-M	Flomatic / 2" FPT x 2" FPT	\$ 148.03
	79X107-M	1/8" tap in inlet, 1/4" tap in outlet / 2" FPT x 2" FPT	POR
	79X146-M	Solid / 2" MPT x 2" FPT	\$ 145.69
	79X154-M	Solid / 3" FPT x 3" FPT	\$ 306.74

Brass Foot Valves

	Size (FPT)		List Price
	79X141-M	3/4"	\$ 15.70
	79X142-M	1"	\$ 25.45
	79X143-M	1 1/4"	\$ 33.38
	79X144-M	1 1/2"	\$ 42.24



Brass Full Port Ball Valves

	Size (FPT)		List Price
79X229-M	3/4"	\$	23.04
79X230-M	1"	\$	37.47
79X231-M	1 1/4"	\$	63.97
79X232-M	1 1/2"	\$	94.86
79X233-M	2"	\$	130.95



PVC Full Port Ball Valves

	Size		List Price
79X176-9	3/4" FPT	\$	5.77
79X203-9	3/4" slip	\$	5.77
79X177-9	1" FPT	\$	7.94
79X201-9	1" slip	\$	8.61
79X231-9	1 1/4" FPT	\$	11.21
79X202-9	1 1/4" slip	\$	12.14
79X232-9	1 1/2" FPT	\$	18.16
79X204-9	1 1/2" slip	\$	19.67
79X233-9	2" FPT	\$	24.03
79X205-9	2" slip	\$	26.03



Brass Gate Valves

	Size (FPT)		List Price
79X180-M	3/4"	\$	13.68
79X181-M	1"	\$	27.48
79X182-M	1 1/4"	\$	52.25
79X190-M	1 1/2"	\$	51.97
79X194-M	2"	\$	70.01
79X199-M	3"	\$	202.56
79X198-M	4"	\$	351.13



PVC Gate Valves - Slip

	Size		List Price
79X281-9	1"	\$	30.65
79X282-9	1 1/4"	\$	41.45
79X283-9	1 1/2"	\$	38.65
79X284-9	2"	\$	49.54



Brass Sample/Petcock Valve	Size (MPT)	List Price
79X195-M	1/4"	POR



Brass Boiler Drain Valves	Size (MPT)	List Price
79X187-M	1/2"	\$ 14.31
79X183-M	3/4"	\$ 14.68



Brass Hose Bibb Valves	Size (MPT)	List Price
79X192-M	1/2"	\$ 11.52
79X193-M	3/4"	\$ 12.46



Freeze Proof Wall Faucet Valve	Description	List Price
79X237-M	Fits up to 12" wall.	\$ 34.27




Merrill Yard Hydrants	Description / Bury Depth	List Price
79X189-M	C-1000 frostproof / 1"	POR
79X179-M	Anyflow frostproof w/self adjusting valve and stainless steel operating rod for long life. / 1"	POR
79X185-M	C-1000 frostproof / 2"	\$ 97.93
79X184-M	Anyflow frostproof w/self adjusting valve and stainless steel operating rod for long life. / 2"	\$ 147.40
79X186-M	C-1000 frostproof / 3"	\$ 102.27
79X191-M	Anyflow frostproof w/self adjusting valve and stainless steel operating rod for long life. / 3"	\$ 163.37





Simmons Yard Hydrants	Description / Bury Depth	List Price
79X174-M	Premier / 2"	\$ 112.32
79X172-M	Deluxe w/flow lock wheel / 2"	\$ 118.59
79X173-M	Premier / 3"	\$ 135.01



Baker Yard Hydrants	Description / Bury Depth	List Price
79X196-M	Frostproof w/1" inlet adjustable flow with o-ring plunger no packing, no adjustment & no corrosion because water flows through internal 3/4" schedule 80 PVC pipe. / 2"	\$ 172.41
79X197-M	Frostproof w/1" inlet adjustable flow with o-ring plunger no packing, no adjustment & no corrosion because water flows through internal 3/4" schedule 80 PVC pipe. / 3"	\$ 175.25

Flow Control Valves		Description / Thread Size (FPT)	List Price
	79X212-M	2 GPM / 1"	\$ 119.63
	79X213-M	3 GPM / 1"	\$ 119.63
	79X214-M	4 GPM / 1"	\$ 119.63
	79X215-M	5 GPM / 1"	\$ 119.63
	79X216-M	6 GPM / 1"	\$ 119.63
	79X217-M	7 GPM / 1"	\$ 119.63
	79X218-M	8 GPM / 1"	\$ 119.63
	79X219-M	9 GPM / 1"	\$ 119.63
	79X220-M	10 GPM / 1"	\$ 119.63

Constant Pressure Pump Control Valves		Description / Size	List Price
	79X621-M	Cycle Gard I Pump control valve 15-75 PSI 2 / 1" MPT x 3/4" FPT	\$ 207.89
	79X622-M	Cycle Gard I Pump control valve 15-75 PSI 2 / 1 1/4" MPT x 1" FPT	\$ 229.49
	79X645-M	Cycle Gard II Pump control valve 25-175 PSI 3 / 2" FPT	\$ 1,991.71
	79X647-M	Cycle Gard II Pump control valve 25-175 PSI 3 / 3" FPT	POR
	79X655-M	Cycle Gard II Pump control valve 25-175 PSI 3 / 2" Flanged	POR
	79X657-M	Cycle Gard II Pump control valve 25-175 PSI 3 / 3" Flanged	POR
79X658-M	Cycle Gard II Pump control valve 25-175 PSI 3 / 4" Flanged	POR	

Flowmeters		Flow Range / Head Loss @ Max Flow / Size	List Price
	79X502-M	40-250 GPM / 29.50" / 2" MPT	POR
	79X503-M	40-250 GPM / 29.50" / 3" Flanged	POR
	79X504-M	50-600 GPM / 23.00" / 4" Flanged	POR
	79X506-M	90-1200 GPM / 17.00" / 6" Flanged	POR



Galvanized Nipples	Size (MPT)	List Price
35X271-11	1/8" x 1 1/2" long	\$ 2.03
35X274-11	1/8" x 3" long	\$ 2.69
35X276-11	1/8" x 4" long	\$ 3.16
35X278-11	1/8" x 6" long	\$ 6.01
35X300-11	1/4" x close	\$ 1.58
35X301-11	1/4" x 1 1/2" long	\$ 1.85
35X299-11	1/4" x 2" long	\$ 1.85
35X302-11	1/4" x 3" long	\$ 2.40
35X133-11	1/4" x 4" long	\$ 2.88
35X303-11	1/4" x 6" long	\$ 4.40
35X305-11	1/2" x close	\$ 1.38
35X306-11	1/2" x 1 1/2" long	\$ 1.46
35X330-11	1/2" x 2" long	\$ 1.46
35X307-11	1/2" x 3" long	\$ 1.72
35X333-11	1/2" x 4" long	\$ 2.13
35X308-11	1/2" x 6" long	\$ 2.89
35X310-11	3/4" x close	\$ 1.70
35X311-11	3/4" x 1 1/2" long	\$ 1.82
35X220-11	3/4" x 2" long	\$ 1.82
35X309-11	3/4" x 2 1/2" long	\$ 2.03
35X312-11	3/4" x 3" long	\$ 2.03
35X322-11	3/4" x 4" long	\$ 2.60
35X313-11	3/4" x 6" long	\$ 3.75
35X315-11	1" x close	\$ 2.32
35X316-11	1" x 2" long	\$ 2.73
35X323-11	1" x 3" long	\$ 2.96
35X317-11	1" x 4" long	\$ 3.55
35X318-11	1" x 6" long	\$ 4.37
35X319-11	1" x 8" long	\$ 8.25
35X324-11	1" x 10" long	\$ 9.43
35X325-11	1" x 12" long	\$ 10.98
35X181-11	1 1/4" x close	\$ 3.11
35X182-11	1 1/4" x 2" long	\$ 3.38
35X442-11	1 1/4" x 3" long	\$ 3.66



**Galvanized Nipples
(continued)**

	Size (MPT)		List Price
35X183-11	1 1/4" x 4" long	\$	4.34
35X184-11	1 1/4" x 6" long	\$	6.26
35X194-11	1 1/2" x close	\$	3.64
35X470-11	1 1/2" x 2" long	\$	3.90
35X195-11	1 1/2" x 3" long	\$	4.34
35X473-11	1 1/2" x 4" long	\$	5.52
35X475-11	1 1/2" x 6" long	\$	7.47
35X600-11	2" x close	\$	5.12
35X601-11	2" x 2 1/2" long	\$	5.76
35X602-11	2" x 3" long	\$	5.76
35X603-11	2" x 3 1/2" long	\$	7.00
35X604-11	2" x 4" long	\$	7.00
35X606-11	2" x 6" long	\$	10.41
35X701-11	3" x 3" long	\$	20.81
35X703-11	3" x 4" long	\$	24.40
35X705-11	3" x 6" long	\$	30.10
35X753-11	4" x 6" long	\$	40.63
35X800-11	6" x close	\$	69.30



**Galvanized 90 Degree
Elbows**

	Size (FPT)		List Price
35X280-11	1/8"	\$	5.30
35X340-11	1/4"	\$	4.01
35X342-11	1/2"	\$	2.62
35X346-11	3/4"	\$	3.16
35X127-11	1"	\$	5.95
35X187-11	1 1/4"	\$	9.16
35X198-11	1 1/2"	\$	12.08
35X615-11	2"	\$	20.14
35X660-11	2 1/2"	\$	50.18
35X706-11	3"	\$	84.33



Galvanized 90 Degree Reducer Elbows	Size (FPT)		List Price
35X355-11	1/2" x 1/4"	\$	4.94
35X366-11	3/4" x 1/2"	\$	5.38
35X126-11	1" x 3/4"	\$	6.87
35X451-11	1 1/4" x 1"	\$	11.50
35X478-11	1 1/2" x 3/4"	\$	14.14
35X479-11	1 1/2" x 1"	\$	17.71
35X480-11	1 1/2" x 1 1/4"	\$	17.71
35X618-11	2" x 1 1/2"	\$	21.46
35X662-11	2 1/2" x 2"	\$	78.58



Galvanized 90 Degree Street Elbows	Size (FPT x MPT)		List Price
35X282-11	1/8"	\$	5.68
35X341-11	1/4"	\$	5.48
35X343-11	1/2"	\$	5.68
35X374-11	3/4"	\$	5.48
35X168-11	1"	\$	7.47
35X188-11	1 1/4"	\$	12.58
35X481-11	1 1/2"	\$	13.62
35X619-11	2"	\$	26.81
35X663-11	2 1/2"	\$	72.70



Galvanized 45 Degree Elbows	Size (FPT)		List Price
35X281-11	1/8"	\$	6.02
35X394-11	1/4"	\$	6.75
35X345-11	1/2"	\$	5.93
35X373-11	3/4"	\$	5.75
35X167-11	1"	\$	6.59
35X186-11	1 1/4"	\$	12.03
35X482-11	1 1/2"	\$	14.33
35X620-11	2"	\$	21.38
35X713-11	3"	\$	105.36
35X764-11	4"	\$	176.55



Galvanized 45 Degree Street Elbows

	Size (FPT x MPT)		List Price
35X283-11	1/8"	\$	7.85
35X347-11	1/4"	\$	6.75
35X356-11	1/2"	\$	5.93
35X367-11	3/4"	\$	9.60
35X144-11	1"	\$	10.44
35X452-11	1 1/4"	\$	17.78
35X483-11	1 1/2"	\$	21.52
35X621-11	2"	\$	31.40



Galvanized Tees

	Size (FPT)		List Price
35X284-11	1/8"	\$	6.01
35X370-11	1/4"	\$	5.20
35X371-11	1/2"	\$	3.21
35X372-11	3/4"	\$	5.39
35X158-11	1"	\$	8.80
35X185-11	1 1/4"	\$	13.91
35X197-11	1 1/2"	\$	17.36
35X625-11	2"	\$	28.99
35X667-11	2 1/2"	\$	77.85
35X716-11	3"	\$	91.28
35X768-11	4"	\$	215.83



Galvanized Reducer Tees

	Size (FPT) Run x Branch		List Price
35X360-11	1/2" x 1/4"	\$	5.28
35X382-11	3/4" x 1/4"	\$	7.71
35X383-11	3/4" x 1/2"	\$	7.43
35X228-11	1" x 1/4"	\$	12.60
35X387-11	1" x 1/2"	\$	10.43
35X165-11	1" x 3/4"	\$	10.43
35X457-11	1 1/4" x 3/4"	\$	16.14
35X458-11	1 1/4" x 1"	\$	16.14
35X486-11	1 1/2" x 3/4"	\$	19.95
35X487-11	1 1/2" x 1"	\$	19.95
35X488-11	1 1/2" x 1 1/2"	\$	21.77
35X630-11	2" x 1 1/2"	\$	33.88
35X719-11	3" x 2"	\$	126.09


Galvanized Bullhead

	Size (FPT) Run x Branch	List Price
Tees		
35X380-11	3/4" x 1"	POR
35X385-11	1" x 1 1/4"	POR
35X386-11	1" x 1 1/2"	POR
35X455-11	1 1/4" x 1 1/2"	POR
35X485-11	1 1/2" x 2"	POR


Galvanized Crosses

	Size (FPT)	List Price
35X392-11	1/4"	POR
35X344-11	1/2"	POR
35X375-11	3/4"	POR
35X169-11	1"	POR
35X189-11	1 1/4"	POR
35X489-11	1 1/2"	POR


Galvanized Couplings

	Description / Size (FPT)	List Price
35X279-11	Straight / 1/8"	\$ 4.25
35X430-11	Straight / 1/4"	\$ 4.63
35X431-11	Straight / 1/2"	\$ 3.74
35X432-11	Straight / 3/4"	\$ 4.30
35X160-11	Merchant / 1"	\$ 2.03
35X434-11	Straight / 1"	POR
35X159-11	Merchant / 1 1/4"	\$ 134,113.85
35X435-11	Straight / 1 1/4"	POR
35X163-11	Merchant / 1 1/2"	\$ 3.64


**Galvanized Couplings
(Continued)**

	Description / Size (FPT)	List Price
35X490-11	Straight / 1 1/2"	POR
35X260-11	Merchant / 2"	\$ 5.35
35X634-11	Straight / 2"	POR
35X672-11	Straight / 2 1/2"	POR
35X724-11	Straight / 3"	POR
35X775-11	Straight / 4"	POR
35X803-11	Straight / 6"	POR



**Galvanized Reducer
Couplings**

	Size (FPT)		List Price
35X348-11	1/4" x 1/8"	\$	4.39
35X361-11	1/2" x 1/4"	\$	3.99
35X136-11	3/4" x 1/4"	\$	4.94
35X135-11	3/4" x 1/2"	\$	4.33
35X178-11	1" x 1/4"	\$	7.42
35X179-11	1" x 1/2"	\$	7.27
35X131-11	1" x 3/4"	\$	6.75
35X436-11	1 1/4" x 3/4"	\$	9.23
35X437-11	1 1/4" x 1"	\$	9.23
35X491-11	1 1/2" x 3/4"	\$	11.87
35X492-11	1 1/2" x 1"	\$	11.87
35X493-11	1 1/2" x 1 1/4"	\$	11.23
35X635-11	2" x 1"	\$	16.22
35X636-11	2" x 1 1/4"	\$	17.14
35X637-11	2" x 1 1/2"	\$	16.22
35X674-11	2 1/2" x 1 1/2"	\$	51.14
35X675-11	2 1/2" x 2"	\$	50.17
35X726-11	3" x 1 1/2"	\$	66.62
35X727-11	3" x 2"	\$	62.99
35X728-11	3" x 2 1/2"	\$	66.62
35X777-11	4" x 2"	\$	144.20
35X778-11	4" x 2 1/2"	\$	61.84
35X779-11	4" x 3"	\$	144.20
35X805-11	6" x 4"	\$	324.28



Galvanized Hex Reducer

Bushings	Size (MPT x FPT)		List Price
35X349-11	1/4" x 1/8"	\$	1.28
35X117-11	1/2" x 1/4"	\$	3.30
35X164-11	3/4" x 1/4"	\$	5.78
35X376-11	3/4" x 1/2"	\$	5.20
35X120-11	1" x 1/4"	\$	6.87
35X116-11	1" x 1/2"	\$	6.25
35X119-11	1" x 3/4"	\$	5.88
35X191-11	1 1/4" x 3/4"	\$	7.93
35X121-11	1 1/4" x 1"	\$	7.93
35X494-11	1 1/2" x 3/4"	\$	11.50
35X200-11	1 1/2" x 1"	\$	10.37
35X123-11	1 1/2" x 1 1/4"	\$	9.58
35X640-11	2" x 1"	\$	12.66
35X641-11	2" x 1 1/4"	\$	12.66
35X642-11	2" x 1 1/2"	\$	11.09
35X678-11	2 1/2" x 1 1/2"	\$	20.41
35X679-11	2 1/2" x 2"	\$	18.09
35X733-11	3" x 2"	\$	24.41
35X734-11	3" x 2 1/2"	\$	25.83
35X783-11	4" x 2"	\$	50.80
35X784-11	4" x 2 1/2"	\$	57.58
35X785-11	4" x 3"	\$	53.78
35X810-11	6" x 4"	\$	91.28



Galvanized Caps	Size (FPT)		List Price
35X287-11	1/8"	\$	1.19
35X350-11	1/4"	\$	1.26
35X363-11	1/2"	\$	2.75
35X433-11	3/4"	\$	3.97
35X162-11	1"	\$	4.39
35X438-11	1 1/4"	\$	6.35
35X497-11	1 1/2"	\$	8.12
35X645-11	2"	\$	10.26
35X680-11	2 1/2"	\$	32.58
35X736-11	3"	\$	39.48
35X788-11	4"	\$	78.42
35X815-11	6"	\$	285.40



Galvanized Unions	Size (FPT)		List Price
35X352-11	1/4"	\$	17.97
35X364-11	1/2"	\$	12.07
35X129-11	3/4"	\$	14.33
35X130-11	1"	\$	17.82
35X439-11	1 1/4"	\$	24.24
35X498-11	1 1/2"	\$	31.03
35X646-11	2"	\$	41.44
35X737-11	3"	\$	163.85
35X789-11	4"	\$	301.45



Galvanized Plugs	Description / Size (MPT)		List Price
35X290-11	Square head / 1/8"	\$	0.52
35X390-11	Square head / 1/4"	\$	0.58
35X351-11	Hex socket / 1/4"	\$	0.55
35X102-11	Square head / 1/2"	\$	1.24
35X103-11	Hex socket / 1/2"	\$	0.95
35X112-11	Square head / 3/4"	\$	1.28
35X138-11	Hex socket / 3/4"	\$	1.75
35X107-11	Square head / 1"	\$	4.19
35X140-11	Hex socket / 1"	\$	4.19
35X190-11	Square head / 1 1/4"	\$	6.48
35X199-11	Square head / 1 1/2"	\$	8.73
35X647-11	Square head / 2"	\$	11.09
35X682-11	Square head / 2 1/2"	\$	21.63
35X738-11	Square head / 3"	\$	30.68
35X790-11	Square head / 4"	\$	31.80

Polyethylene Pipe

Galvanized Insert Male Adapters - MPT x Insert



Galvanized Insert Male Adapters - MPT x Insert	Description / Size		List Price
35R118-G	3/4"	\$	2.26
35R136-G	1"	\$	3.25
35R137-G	1 1/4"	\$	4.42

**Polyethylene Pipe
Galvanized Insert
Reducer Male Adapters -
MPT x Insert**



	Description / Size		List Price
35R119-G	1" x 3/4"	\$	26.13
35R120-G	1 1/4" x 1"	\$	27.77
35R122-G	1 1/2" x 1 1/4"	\$	37.85

**Polyethylene Pipe
Galvanized Insert
Reducer Male Adapters -
Insert x MPT**



	Size		List Price
35R140-G	1" x 3/4"	\$	5.05
35R160-G	1 1/4" x 1"	\$	19.50

**Galvanized Insert
Female Adapters - FPT x
Insert**



	Size		List Price
35R150-G	3/4"	\$	3.83
35R135-G	1"	\$	5.16
35R151-G	1 1/4"	\$	10.44

**Polyethylene Pipe
Galvanized Insert
Couplings**



	Size		List Price
35R121-G	3/4"	\$	2.46
35R145-G	1"	\$	3.17
35R146-G	1 1/4"	\$	5.42

Brass Nipples



	Size (MPT)		List Price
35X271-2	1/8" x 1 1/2" long	\$	2.95
35X274-2	1/8" x 3" long	\$	3.84
35X276-2	1/8" x 4" long	\$	4.64
35X278-2	1/8" x 6" long	\$	6.61
35X300-2	1/4" x close	\$	2.95
35X301-2	1/4" x 1 1/2" long	\$	3.37
35X299-2	1/4" x 2" long	\$	3.78

Brass Nipples
(continued)

	Size (MPT)		List Price
35X302-2	1/4" x 3" long	\$	3.98
35X133-2	1/4" x 4" long	\$	6.19
35X303-2	1/4" x 6" long	\$	8.92
35X305-2	1/2" x close	\$	3.86
35X306-2	1/2" x 1 1/2" long	\$	4.45
35X307-2	1/2" x 3" long	\$	7.34
35X333-2	1/2" x 4" long	\$	9.62
35X308-2	1/2" x 6" long	\$	13.96
35X310-2	3/4" x close	\$	5.61
35X311-2	3/4" x 1 1/2" long	\$	5.92
35X312-2	3/4" x 3" long	\$	9.49
35X322-2	3/4" x 4" long	\$	12.33
35X313-2	3/4" x 6" long	\$	17.14
35X315-2	1" x close	\$	8.25
35X316-2	1" x 2" long	\$	10.12
35X323-2	1" x 3" long	\$	13.48
35X317-2	1" x 4" long	\$	17.47
35X318-2	1" x 6" long	\$	25.65
35X319-2	1" x 8" long	\$	32.64
35X324-2	1" x 10" long	\$	43.54
35X181-2	1 1/4" x close	\$	12.56
35X182-2	1 1/4" x 2" long	\$	14.08
35X442-2	1 1/4" x 3" long	\$	21.24
35X183-2	1 1/4" x 4" long	\$	24.52
35X184-2	1 1/4" x 6" long	\$	35.67
35X194-2	1 1/2" x close	\$	15.73
35X470-2	1 1/2" x 2" long	\$	16.86
35X195-2	1 1/2" x 3" long	\$	23.14
35X473-2	1 1/2" x 4" long	\$	30.19
35X475-2	1 1/2" x 6" long	\$	42.53
35X602-2	2" x 3" long	\$	29.85
35X604-2	2" x 4" long	\$	37.14
35X606-2	2" x 6" long	\$	54.72
35X653-2	2 1/2" x 4" long	\$	174.24
35X655-2	2 1/2" x 6" long	\$	122.58
35X703-2	3" x 4" long	\$	113.31
35X705-2	3" x 6" long	\$	162.63
35X751-2	4" x 4" long	\$	277.00
35X753-2	4" x 6" long	\$	236.85





Brass 90 Degree Elbows	Size (FPT)		List Price
35X280-2	1/8"	\$	4.90
35X340-2	1/4"	\$	4.90
35X342-2	1/2"	\$	7.46
35X346-2	3/4"	\$	10.08
35X127-2	1"	\$	15.48
35X187-2	1 1/4"	\$	24.65
35X198-2	1 1/2"	\$	30.77
35X615-2	2"	\$	50.07



Brass 90 Degree Street Elbows	Size (FPT x MPT)		List Price
		\$	21.00
35X282-2	1/8"	\$	7.46
35X341-2	1/4"	\$	7.46
35X343-2	1/2"	\$	9.25
35X374-2	3/4"	\$	13.12
35X168-2	1"	\$	20.33
35X188-2	1 1/4"	\$	33.15



Brass 45 Degree Elbows	Size (FPT)		List Price
35X394-2	1/4"	\$	5.39
35X345-2	1/2"	\$	6.81
35X373-2	3/4"	\$	10.08
35X167-2	1"	\$	17.00
35X186-2	1 1/4"	\$	27.12
35X482-2	1 1/2"	\$	33.98



Brass 45 Degree Street Elbows	Size (FPT x MPT)		List Price
35X356-2	1/2"	\$	9.25
35X367-2	3/4"	\$	13.12
35X144-2	1"	\$	21.66
35X452-2	1 1/4"	\$	33.15



Brass Tees	Size (FPT)		List Price
35X284-2	1/8"	\$	6.81
35X370-2	1/4"	\$	6.81
35X371-2	1/2"	\$	8.62
35X372-2	3/4"	\$	12.36
35X158-2	1"	\$	21.97
35X185-2	1 1/4"	\$	30.77
35X197-2	1 1/2"	\$	42.35
35X625-2	2"	\$	69.41



Brass Reducer Tees	Size (FPT) Run x Branch		List Price
35X228-2	1" x 1/4"	\$	20.98
35X387-2	1" x 1/2"	\$	26.99
35X165-2	1" x 3/4"	\$	26.99
35X457-2	1 1/4" x 3/4"	\$	38.09
35X458-2	1 1/4" x 1"	\$	38.09
35X487-2	1 1/2" x 1"	\$	52.43
35X488-2	1 1/2" x 1 1/4"	\$	52.43
35X630-2	2" x 1 1/2"	\$	85.66



Brass Crosses	Size (FPT)		List Price
35X392-2	1/4"		POR
35X344-2	1/2"		POR
35X375-2	3/4"		POR
35X169-2	1"		POR
35X189-2	1 1/4"		POR



Brass Couplings	Size (FPT)		List Price
35X279-2	1/8"	\$	5.22
35X430-2	1/4"	\$	5.22
35X431-2	1/2"	\$	6.55
35X432-2	3/4"	\$	8.62
35X434-2	1"	\$	13.05
35X435-2	1 1/4"	\$	20.42
35X196-2	1 1/2"	\$	29.07
35X634-2	2"	\$	45.66
35X672-2	2 1/2"	\$	61.23
35X724-2	3"	\$	127.75



Brass Drop Pipe Couplings

	Size (FPT)		List Price
35X161-2	1"	\$	14.47
35X159-2	1 1/4"	\$	17.00



Brass Reducer Couplings

	Size (FPT)		List Price
35X348-2	1/4" x 1/8"	\$	5.56
35X361-2	1/2" x 1/4"	\$	6.92
35X135-2	3/4" x 1/2"	\$	10.34
35X136-2	3/4" x 1/4"	\$	11.46
35X178-2	1" x 1/4"	\$	14.25
35X179-2	1" x 1/2"	\$	17.20
35X131-2	1" x 3/4"	\$	17.20
35X436-2	1 1/4" x 3/4"	\$	27.73
35X437-2	1 1/4" x 1"	\$	27.73
35X491-2	1 1/2" x 3/4"	\$	39.60



Brass Reducer Couplings

	Size (FPT)		List Price
35X492-2	1 1/2" x 1"	\$	35.07
35X493-2	1 1/2" x 1 1/4"	\$	35.07
35X636-2	2" x 1 1/4"	\$	52.09
35X637-2	2" x 1 1/2"	\$	52.09
35X674-2	2 1/2" x 1 1/2"	\$	112.39
35X675-2	2 1/2" x 2"	\$	112.39
35X727-2	3" x 2"	\$	148.96
35X779-2	4" x 3"	\$	212.49



Brass Hex Reducer Bushings

	Size (MPT x FPT)		List Price
35X349-2	1/4" x 1/8"	\$	4.13
35X117-2	1/2" x 1/4"	\$	4.13
35X164-2	3/4" x 1/4"	\$	6.87
35X376-2	3/4" x 1/2"	\$	5.71
35X120-2	1" x 1/4"	\$	10.42
35X116-2	1" x 1/2"	\$	8.62
35X119-2	1" x 3/4"	\$	13.41
35X191-2	1 1/4" x 3/4"	\$	13.45
35X121-2	1 1/4" x 1"	\$	14.65
35X494-2	1 1/2" x 3/4"	\$	22.87
35X200-2	1 1/2" x 1"	\$	18.75
35X123-2	1 1/2" x 1 1/4"	\$	18.75
35X640-2	2" x 1"	\$	33.39
35X641-2	2" x 1 1/4"	\$	28.30
35X642-2	2" x 1 1/2"	\$	28.30
35X678-2	2 1/2" x 1 1/2"	\$	67.57
35X679-2	2 1/2" x 2"	\$	55.47
35X732-2	3" x 1 1/2"	\$	132.82
35X733-2	3" x 2"	\$	83.89
35X783-2	4" x 2"	\$	202.46
35X785-2	4" x 3"	\$	171.38



Brass Caps

	Size (FPT)		List Price
35X287-2	1/8"	\$	3.88
35X350-2	1/4"	\$	3.88
35X363-2	1/2"	\$	5.21
35X433-2	3/4"	\$	6.87
35X162-2	1"	\$	10.72
35X438-2	1 1/4"	\$	16.33
35X497-2	1 1/2"	\$	22.02
35X645-2	2"	\$	37.44





Brass Unions	Size (FPT)		List Price
35X364-2	1/2"	\$	18.96
35X129-2	3/4"	\$	26.20
35X130-2	1"	\$	34.72
35X439-2	1 1/4"	\$	50.83
35X498-2	1 1/2"	\$	60.05
35X646-2	2"	\$	92.45



Brass Plugs (Square Head)	Size (MPT)		List Price
35X289-2	1/8"	\$	4.73
35X390-2	1/4"	\$	4.97
35X102-2	1/2"	\$	7.95
35X112-2	3/4"	\$	10.36
35X107-2	1"	\$	17.66
35X190-2	1 1/4"	\$	31.81
35X199-2	1 1/2"	\$	41.35
35X647-2	2"	\$	29.89
35X682-2	2 1/2"	\$	51.16
35X738-2	3"	\$	81.76
35X790-2	4"	\$	159.73



Polyethylene Pipe Brass Insert Male Adapters - MPT x Insert	Size		List Price
35R118-B	3/4"	\$	9.27
35R136-B	1"	\$	17.01
35R137-B	1 1/4"	\$	19.30



Polyethylene Pipe Brass Insert Reducer Male Adapters - MPT x Insert	Size		List Price
35R119-B	1" x 3/4"	\$	73.17
35R120-B	1 1/4" x 1"	\$	87.23
35R122-B	1 1/2" x 1 1/4"	\$	113.17



**Polyethylene Pipe Brass
Insert Reducer Male
Adapters - Insert x MPT**

	Size		List Price
35R140-B	1" x 3/4"	\$	33.77
35R160-B	1 1/4" x 1"	\$	40.70



**Polyethylene Pipe Brass
Insert Rope Adapters -
MPT x Insert**

	Size		List Price
35R138-B	1"	\$	20.53
35R139-B	1 1/4"	\$	26.05



**Polyethylene Pipe Brass
Insert Female Adapters -
FPT x Insert**

	Size		List Price
35R150-B	3/4"	\$	13.61
35R135-B	1"	\$	19.95
35R151-B	1 1/4"	\$	25.23



**Polyethylene Pipe Brass
Insert Couplings - Insert
x Insert**

	Size		List Price
35R121-B	3/4"	\$	11.47
35R145-B	1"	\$	14.31
35R146-B	1 1/4"	\$	21.12



**Polyethylene Pipe Brass
Insert 90 Degree Elbows -
Insert x Insert**

	Size		List Price
35R115-B	3/4"	\$	14.08
35R127-B	1"	\$	17.83
35R128-B	1 1/4"	\$	34.50



**Polyethylene Pipe Brass
Insert Tees - Insert x
Insert**

	Size		List Price
35R123-B	3/4"	\$	15.49
35R154-B	1"	\$	22.06
35R156-B	1 1/4"	\$	41.07



**Polyethylene Pipe Brass
Hydrant Fittings - Insert
x MPT**

	Size		List Price
35R133-B	3/4" insert x 3/4" MPT elbow	\$	13.14
35R132-B	1" insert x 3/4" MPT elbow	\$	16.31
35R134-B	1" insert x 1" MPT elbow	\$	21.12
35R130-B	1" insert x 1" insert x 3/4" MPT tee	\$	22.53
35R155-B	1" insert x 1" insert x 1" MPT tee	\$	25.93



**Compression Service
Fittings**

	Description / Size		List Price
37X10-M	Brass service coupling / 3/4" MPT x 3/4" tubing	\$	52.27
37X11-M	Brass service coupling / 1" MPT x 3/4" tubing	\$	57.07
37X12-M	Brass service coupling / 1" MPT x 1" tubing	\$	61.92
37X18-M	Brass service coupling / 1 1/4" MPT x 1 1/4" tubing	\$	118.35
37X13-M	SS insert stiffener / 3/4" tubing	\$	4.96
37X14-M	SS insert stiffener / 1" tubing	\$	5.25
37X21-M	SS insert stiffener / 1 1/4" tubing	\$	6.45
37X15-M	Brass service union / 3/4" tubing	\$	63.63
37X19-M	Brass service union / 1" tubing	\$	72.80
37X20-M	Brass service union / 1 1/4" tubing	\$	125.68
37X16-M	Brass elbow / 3/4" tubing	\$	57.23
37X17-M	Brass tee / 3/4" tubing	\$	154.08



Stainless Steel Nipples

	Size (MPT)		List Price
PF057140120	4" x 12" long	\$	220.46
PF057160120	6" x 12" long	\$	431.69



**Stainless Steel Drop
Pipe Couplings**

	Size (FPT)		List Price
35X157-6	1"	\$	13.08
35X159-6	1 1/4"	\$	15.32
35X163-6	1 1/2"	\$	19.45
35X260-6	2"	\$	22.92



**Stainless Steel Insert
Male Adapters - MPT x
Insert**

	Size		List Price
35R118-6	3/4"	\$	9.62
35R136-6	1"	\$	15.84
35R137-6	1 1/4"	\$	19.95



**Stainless Steel Insert
Reducer Male Adapters -
MPT x Insert**

	Size		List Price
35R120-6	1 1/4" x 1"	\$	17.60



**Nylon Hex Reducer
Bushings - Threaded**

	Size (MPT x FPT)		List Price
35X121-9	1 1/4" x 1"	\$	5.07



**Nylon Insert Male
Adapters - MPT x Insert**

	Size		List Price
35R118-P	3/4"	\$	1.01
35R136-P	1"	\$	1.20



**Nylon Insert Couplings -
Insert x Insert**

	Size		List Price
35R121-P	3/4"	\$	0.85
35R145-P	1"	\$	1.14



**Nylon Insert 90 Degree
Elbows - Insert x Insert**

	Size		List Price
35R115-P	3/4"	\$	1.56
35R127-P	1"	\$	1.69



**Nylon Insert Tees - Insert
x Insert x Insert**

	Size		List Price
35R123-P	3/4"	\$	1.91
35R154-P	1"	\$	2.66



**Nylon Insert Reducer
Coupling - Insert x Insert**

	Size		List Price
35R143-P	1" x 3/4"	\$	1.64



**Sch 40 PVC 90 Degree
Elbows - Slip x Slip**

	Size		List Price
35X401-9	3/4"	\$	0.60
35X300-9	1"	\$	1.08
35X505-9	1 1/4"	\$	1.91
35X560-9	1 1/2"	\$	2.06
35X523-9	2"	\$	3.22



**Sch 40 PVC 90 Degree
Street Elbows - Slip x
Spigot**

	Size		List Price
35X409-9	3/4"	\$	1.87
35X307-9	1"	\$	3.22
35X497-9	1 1/4"	\$	3.86
35X564-9	1 1/2"	\$	4.25
35X539-9	2"	\$	8.21



**Sch 40 PVC 90 Degree
Elbows - Slip x FPT**

	Size		List Price
35X412-9	3/4"	\$	0.77
35X312-9	1"	\$	1.44
35X513-9	1 1/4"	\$	2.40
35X561-9	1 1/2"	\$	2.68



**Sch 40 PVC 90 Degree
Street Elbows - Slip x
MPT**

	Size		List Price
35X313-9	1"	\$	2.31
35X514-9	1 1/4"	\$	3.22
35X562-9	1 1/2"	\$	3.37



**Sch 40 PVC 45 Degree
Elbows - Slip x Slip**

	Size		List Price
35X413-9	3/4"	\$	1.37
35X305-9	1"	\$	1.65
35X515-9	1 1/4"	\$	2.31
35X563-9	1 1/2"	\$	2.89
35X536-9	2"	\$	3.78



**Sch 40 PVC 45 Degree
Street Elbows - Slip x
Spigot**

	Size		List Price
35X498-9	1 1/4"	\$	2.31
35X565-9	1 1/2"	\$	2.89
35X529-9	2"	\$	3.78



**Sch 40 PVC Tees - Slip x
Slip x Slip**

	Size		List Price
35X402-9	3/4"	\$	0.77
35X301-9	1"	\$	1.44
35X507-9	1 1/4"	\$	2.24
35X550-9	1 1/2"	\$	2.73
35X522-9	2"	\$	3.98



**Sch 40 PVC Reducer
Tees - Slip x Slip x Slip**

	Size		List Price
35X331-9	1" x 1" x 1/2"	\$	1.52
35X314-9	1" x 1" x 3/4"	\$	1.65
35X543-9	1 1/4" x 1 1/4" x 1/2"	\$	2.47
35X510-9	1 1/4" x 1 1/4" x 3/4"	\$	2.35
35X501-9	1 1/4" x 1 1/4" x 1"	\$	2.47
35X557-9	1 1/2" x 1 1/2" x 3/4"	\$	4.34
35X551-9	1 1/2" x 1 1/2" x 1"	\$	4.34
35X552-9	1 1/2" x 1 1/2" x 1 1/4"	\$	4.34
35X521-9	2" x 2" x 1"	\$	4.25
35X527-9	2" x 2" x 1 1/4"	\$	4.25
35X528-9	2" x 2" x 1 1/2"	\$	4.25



**Sch 40 PVC Tees - Slip x
Slip x FPT**

	Size		List Price
35X415-9	3/4"	\$	1.37
35X323-9	1"	\$	2.55
35X503-9	1 1/4"	\$	4.07
35X555-9	1 1/2"	\$	5.28
35X590-9	2"	\$	6.69



**Sch 40 PVC Reducer
Tees - Slip x Slip x FPT**

	Size		List Price
35X328-9	1" x 1" x 1/2"	\$	1.78
35X327-9	1" x 1" x 3/4"	\$	3.99
35X490-9	1 1/4" x 1 1/4" x 1/2"	\$	4.25
35X491-9	1 1/4" x 1 1/4" x 3/4"	\$	4.25
35X502-9	1 1/4" x 1 1/4" x 1"	\$	4.25
35X556-9	1 1/2" x 1 1/2" x 3/4"	\$	5.28
35X553-9	1 1/2" x 1 1/2" x 1"	\$	5.28
35X554-9	1 1/2" x 1 1/2" x 1 1/4"	\$	5.28
35X592-9	2" x 2" x 1"	\$	6.65
35X593-9	2" x 2" x 1 1/4"	\$	6.65
35X594-9	2" x 2" x 1 1/2"	\$	6.65



Sch 40 PVC Crosses - Slip x Slip x Slip x Slip	Size		List Price
35X414-9	3/4"	\$	3.24
35X325-9	1"	\$	4.25
35X517-9	1 1/4"	\$	5.62
35X568-9	1 1/2"	\$	6.39



Sch 40 PVC Couplings - Slip x Slip	Size		List Price
35X403-9	3/4"	\$	0.48
35X302-9	1"	\$	0.86
35X508-9	1 1/4"	\$	1.18
35X570-9	1 1/2"	\$	1.26
35X520-9	2"	\$	1.92



Sch 40 PVC Long Bell Couplings - Slip x Slip	Size		List Price
35X010-9	1"	\$	6.67
35X012-9	1 1/4"	\$	5.02
35X015-9	1 1/2"	\$	5.15
35X020-9	2"	\$	6.36
35X040-9	4"	\$	18.31



Sch 40 PVC Reducer Couplings - Slip x Slip	Size		List Price
35X316-9	1" x 3/4"	\$	1.52
35X519-9	1 1/4" x 1"	\$	2.55
35X571-9	1 1/2" x 1 1/4"	\$	4.23
35X559-9	2" x 1 1/2"	\$	4.30



Sch 40 PVC Male Adapters - MPT x Slip	Size		List Price
35X399-9	1/2"	\$	0.48
35X400-9	3/4"	\$	0.54
35X303-9	1"	\$	0.97
35X500-9	1 1/4"	\$	1.18
35X576-9	1 1/2"	\$	1.57
35X524-9	2"	\$	2.07



**Sch 40 PVC Reducer
Male Adapters - MPT x
Slip**

	Size		List Price
35X315-9	3/4" x 1"	\$	1.37
35X310-9	1" x 3/4"	\$	2.97
35X574-9	1" x 1 1/4"	\$	3.22
35X493-9	1 1/4" x 1"	\$	3.64
35X499-9	1 1/4" x 1 1/2"	\$	3.64
35X578-9	1 1/2" x 1 1/4"	\$	4.39
35X577-9	1 1/2" x 2"	\$	4.39
35X535-9	2" x 1 1/2"	\$	5.00



**Sch 40 PVC Female
Adapters - Slip x FPT**

	Size		List Price
35X450-9	1/2"	\$	0.60
35X404-9	3/4"	\$	0.77
35X304-9	1"	\$	0.89
35X509-9	1 1/4"	\$	1.31
35X575-9	1 1/2"	\$	1.57
35X525-9	2"	\$	2.12



**Sch 40 PVC Reducer
Female Adapters - Slip x
FPT**

	Size		List Price
35X451-9	1/2" x 3/4"	\$	1.08
35X416-9	3/4" x 1/2"	\$	1.08
35X417-9	3/4" x 1"	\$	1.44
35X309-9	1" x 3/4"	\$	1.44
35X319-9	1" x 1 1/2"	\$	4.52



**Sch 40 PVC Fitting
Adapters - Spigot x FPT**

	Size		List Price
35X321-9	1"	\$	1.27
35X492-9	1 1/4"	\$	1.78
35X588-9	1 1/2"	\$	2.20



Sch 40 PVC Reducer Bushings - Spigot x Slip	Size		List Price
35X418-9	3/4" x 1/2"	\$	0.57
35X322-9	1" x 1/2"	\$	1.02
35X408-9	1" x 3/4"	\$	1.02
35X504-9	1 1/4" x 3/4"	\$	1.37
35X506-9	1 1/4" x 1"	\$	1.37
35X582-9	1 1/2" x 3/4"	\$	1.46
35X580-9	1 1/2" x 1"	\$	1.46
35X581-9	1 1/2" x 1 1/4"	\$	1.46
35X542-9	2" x 1"	\$	2.40
35X534-9	2" x 1 1/4"	\$	2.40
35X537-9	2" x 1 1/2"	\$	2.40



Sch 40 PVC Reducer Bushings - Spigot x FPT	Size		List Price
35X419-9	3/4" x 1/2"	\$	0.89
35X317-9	1" x 1/2"	\$	1.44
35X308-9	1" x 3/4"	\$	1.44
35X495-9	1 1/4" x 1/2"	\$	2.21
35X511-9	1 1/4" x 3/4"	\$	2.21
35X518-9	1 1/4" x 1"	\$	2.21
35X583-9	1 1/2" x 3/4"	\$	2.55
35X584-9	1 1/2" x 1"	\$	2.55
35X579-9	1 1/2" x 1 1/4"	\$	2.55
35X541-9	2" x 1"	\$	3.42
35X548-9	2" x 1 1/4"	\$	3.41
35X549-9	2" x 1 1/2"	\$	3.41



Sch 40 PVC Caps - Slip	Size		List Price
35X407-9	3/4"	\$	0.57
35X306-9	1"	\$	0.89
35X530-9	1 1/4"	\$	1.26
35X585-9	1 1/2"	\$	1.37
35X558-9	2"	\$	1.65



Sch 40 PVC Threaded Caps

	Size (FPT)		List Price
35X406-9	3/4"	\$	1.18
35X326-9	1"	\$	1.78
35X532-9	1 1/4"	\$	2.12
35X587-9	1 1/2"	\$	2.21



Sch 80 PVC Slip Unions - Slip x Slip

	Size		List Price
35X411-9	3/4"	\$	6.00
35X311-9	1"	\$	7.70
35X512-9	1 1/4"	\$	13.71
35X921-9	1 1/2"	\$	17.32
35X951-9	2"	\$	24.10



Sch 80 PVC Threaded Nipples

	Size (MPT)		List Price
PF087110060	1" x 6" long	\$	2.45
PF087110080	1" x 8" long	\$	2.90
PF087110100	1" x 10" long	\$	3.48
PF087110120	1" x 12" long	\$	3.86
PF087112060	1 1/4" x 6" long	\$	3.80
PF087112080	1 1/4" x 8" long	\$	4.62
PF087112120	1 1/4" x 12" long	\$	5.99



Sch 80 PVC Threaded Elbows

	Description / Size (FPT)		List Price
35X840-9	90 / 1"	\$	10.04
35X841-9	45 / 1"	\$	13.87
35X874-9	90 / 1 1/4"	\$	10.82
35X875-9	45 / 1 1/4"	\$	21.15
35X905-9	90 / 1 1/2"	\$	15.33
35X906-9	45 / 1 1/2"	\$	26.59



**Sch 80 PVC Threaded
Tees**

	Size (FPT)		List Price
35X845-9	1"	\$	22.16
35X870-9	1 1/4"	\$	23.49
35X900-9	1 1/2"	\$	28.48



**PVC Drop Pipe Threaded
Couplings**

	Description / Size (FPT)		List Price
35X157-9	Schedule 120 / 1"	\$	2.10
35X160-9	Schedule 120 American Granby / 1"	\$	2.31
35X103-9	Schedule 120 / 1 1/4"	\$	2.73
35X163-9	Schedule 120 / 1 1/2"	\$	3.42
35X526-9	Schedule 120 / 2"	\$	4.27



**Sch 80 PVC Threaded
Reducer Bushings**

	Size (MPT x FPT)		List Price
35X850-9	1" x 3/4"	\$	9.70
35X880-9	1 1/4" x 3/4"	\$	10.29
35X881-9	1 1/4" x 1"	\$	10.29
35X910-9	1 1/2" x 1"	\$	12.20
35X911-9	1 1/2" x 1 1/4"	\$	12.20
PF08392012	2" x 1 1/4"	\$	21.78
PF08392015	2" x 1 1/2"	\$	21.78



**Sch 80 PVC Threaded
Caps**

	Size (FPT)		List Price
35X860-9	1"	\$	8.64
35X890-9	1 1/4"	\$	10.29
35X918-9	1 1/2"	\$	11.76



**Sch 80 PVC Threaded
Unions**

	Size (FPT)		List Price
35X863-9	1"	\$	8.24
35X895-9	1 1/4"	\$	14.44
35X925-9	1 1/2"	\$	18.02
35X955-9	2"	\$	25.35



**Sch 80 PVC Threaded
Plugs**

	Size (MPT)		List Price
35X862-9	1"	\$	6.01
35X892-9	1 1/4"	\$	8.85
35X920-9	1 1/2"	\$	10.76



**PVC Repair
Compression Couplings**

	Size		List Price
35X150-9	3/4"	\$	2.87
35X151-9	1"	\$	3.71
35X152-9	1 1/4"	\$	4.46
35X144-9	1 1/2"	\$	6.15
35X145-9	2"	\$	8.56
35X146-9	4"	\$	36.53



**Stainless Steel Hose
Clamps**

	Size		List Price
35S148-M	1/2" - 1 1/4"	\$	1.42
35S150-M	3/4" - 1 3/4"	\$	1.47
35S151-M	1" - 2"	\$	1.47



**Flexible Hose Clamp
Driver**

	Description / Size		List Price
35S100-M	Bends up to 90 degrees for hard-to-reach places. Non-slip grip handle and reversible socket for driving 1/4" and 5/16" hose clamp screw heads.	\$	30.80

**PVC Pipe Cleaner,
Primer & Cement (Glue)**


	Description / Size		List Price
35X108-CP	PVC cleaner / Pint	\$	18.25
35X108-C	PVC cleaner / Quart	\$	25.34
35X108-CG	PVC cleaner / Gallon	\$	91.19
35X0943-M	PVC primer - purple / Pint	\$	26.97
35X0944-M	PVC primer - purple / Quart	\$	34.64
35X111-S	Medium "HOT" blue cement very fast setting PVC cement formulated for wet conditions and quick pressurization. / 1/2 Pint	\$	16.21
35X111-SP	Medium "HOT" blue cement very fast setting PVC cement formulated for wet conditions and quick pressurization. / Pint	\$	24.67
35X111-SQ	Medium "HOT" blue cement very fast setting PVC cement formulated for wet conditions and quick pressurization. / Quart	\$	44.53
35X109-SP	PVC cement / Pint	\$	23.27
35X109-S	PVC cement / Quart	\$	38.57
35X109-SG	PVC cement / Gallon	\$	126.81
Thread Sealant			
	Description / Size		List Price
35X096-M	Premier pipe joint compound / 1/2 Pint	\$	6.80
35X097-M	Oatey great white joint compound w/teflon / Pint	\$	28.03
35X114-M	Thread sealant/joint compound w/teflon / 1/4 Pint	\$	18.25
35X098-M	Thread sealant/joint compound w/teflon / Pint	\$	41.76
35X095-SP	Rectorseal No. 5 thread sealant/joint compound / Pint	\$	35.50
35X099-M	Teflon tape / 1/2" x 520"	\$	2.08



Twisted Pump Cable	Description / Length (Ft)	List Price
76S123-5	12-3 / 500	\$ 519.49
76S123-10	12-3 / 1000	\$ 1,038.98
76S103-5	10-3 / 500	\$ 808.88
76S103-10	10-3 / 1000	\$ 1,617.75
76S142G-5	14-2 w/ground / 500	\$ 320.00
76S142G-10	14-2 w/ground / 1000	\$ 640.00
76S143G-5	14-3 w/ground / 500	\$ 424.62
76S143G-10	14-3 w/ground / 1000	\$ 849.23
76S122G-5	12-2 w/ground / 500	\$ 436.92
76S122G-10	12-2 w/ground / 1000	\$ 873.85
76S123G-5	12-3 w/ground / 500	\$ 600.00
76S123G-10	12-3 w/ground / 1000	\$ 1,200.00
76S102G-5	10-2 w/ground / 500	\$ 680.00
76S102G-10	10-2 w/ground / 1000	\$ 1,360.00
76S103G-5	10-3 w/ground / 500	\$ 890.77
76S103G-10	10-3 w/ground / 1000	\$ 1,781.54
76S82G-5	8-2 w/ground / 500	\$ 1,061.54
76S82G-10	8-2 w/ground / 1000	\$ 2,123.08
76S83G-5	8-3 w/ground / 500	\$ 1,447.69
76S83G-10	8-3 w/ground / 1000	\$ 2,895.38
76S63G-5	6-3 w/ground / 500	\$ 2,192.31
76S63G-10	6-3 w/ground / 1000	\$ 4,384.62
76S43G-5	4-3 w/ground / 500	\$ 3,227.69
76S43G-10	4-3 w/ground / 1000	\$ 6,455.38



Flat Pump Cable (Color Coded)	Description / Length (Ft)	List Price
76S122P-5	12-2 / 500	\$ 443.08
76S122P-10	12-2 / 1000	\$ 886.15
76S123P-5	12-3 / 500	\$ 660.00
76S123P-10	12-3 / 1000	\$ 1,320.00
76S102P-5	10-2 / 500	\$ 684.62
76S102P-10	10-2 / 1000	\$ 1,369.23
76S103P-5	10-3 / 500	\$ 807.69
76S103P-10	10-3 / 1000	\$ 1,615.38
76S142PG-5	14-2 w/ground / 500	\$ 380.00
76S142PG-10	14-2 w/ground / 1000	\$ 760.00
76S143PG-5	14-3 w/ground / 500	\$ 455.38
76S143PG-10	14-3 w/ground / 1000	\$ 984.62



Flat Pump Cable (Color Coded) (continued)	Description / Length (Ft)		List Price
76S122PG-5	12-2 w/ground / 500	\$	490.77
76S122PG-10	12-2 w/ground / 1000	\$	981.54
76S123PG-5	12-3 w/ground / 500	\$	646.15
76S123PG-10	12-3 w/ground / 1000	\$	1,292.31
76S102PG-5	10-2 w/ground / 500	\$	738.46
76S102PG-10	10-2 w/ground / 1000	\$	1,476.92
76S103PG-5	10-3 w/ground / 500	\$	955.38
76S103PG-10	10-3 w/ground / 1000	\$	1,910.77
76S82PG-5	8-2 w/ground / 500	\$	1,067.69
76S82PG-10	8-2 w/ground / 1000	\$	2,135.38
76S83PG-5	8-3 w/ground / 500	\$	1,400.00
76S83PG-10	8-3 w/ground / 1000	\$	2,803.08
76S63PG-5	6-3 w/ground / 500	\$	2,224.62
76S63PG-10	6-3 w/ground / 1000	\$	4,449.23
76S43PG-5	4-3 w/ground / 500	\$	3,493.85
76S43PG-10	4-3 w/ground / 1000	\$	6,987.69



Flat Jacketed Pump Cable	Description / Length (Ft)	List Price
76S142PJG-5	14-2 w/ground / 500	POR
76S142PJG-10	14-2 w/ground / 1000	POR
76S143PJG-5	14-3 w/ground / 500	\$ 570.77
76S143PJG-10	14-3 w/ground / 1000	\$ 1,067.69
76S122PJG-5	12-2 w/ground / 500	\$ 616.92
76S122PJG-10	12-2 w/ground / 1000	\$ 1,233.85
76S123PJG-5	12-3 w/ground / 500	\$ 796.92
76S123PJG-10	12-3 w/ground / 1000	\$ 1,593.85
76S102PJG-5	10-2 w/ground / 500	\$ 870.77
76S102PJG-10	10-2 w/ground / 1000	\$ 1,741.54
76S103PJG-5	10-3 w/ground / 500	\$ 1,149.23
76S103PJG-10	10-3 w/ground / 1000	\$ 2,298.46
76S83PJG-5	8-3 w/ground / 500	\$ 1,636.92
76S83PJG-10	8-3 w/ground / 1000	\$ 3,273.85
76S63PJG-5	6-3 w/ground / 500	\$ 2,449.23
76S63PJG-10	6-3 w/ground / 1000	\$ 4,898.46
76S43PJG-5	4-3 w/ground / 500	\$ 3,575.38
76S43PJG-10	4-3 w/ground / 1000	\$ 7,150.77
76S23PJG-5	2-3 w/ground / 500	\$ 5,570.77
76S23PJG-10	2-3 w/ground / 1000	\$ 11,141.54

Flat UF Cable For Direct Bury



	Description / Length (Ft)		List Price
76S142G-25UF	14-2 w/ground / 250	\$	182.31
76S142G-5UF	14-2 w/ground / 500	\$	364.62
76S142G-10UF	14-2 w/ground / 1000	\$	729.23
76S143G-5UF	14-3 w/ground / 500	\$	544.62
76S143G-10UF	14-3 w/ground / 1000	\$	1,089.23
76S122G-25UF	12-2 w/ground / 250	\$	263.08
76S122G-5UF	12-2 w/ground / 500	\$	526.15
76S122G-10UF	12-2 w/ground / 1000	\$	1,052.31
76S123G-5UF	12-3 w/ground / 500	\$	698.46
76S123G-10UF	12-3 w/ground / 1000	\$	1,480.00
76S102G-5UF	10-2 w/ground / 500	\$	841.54
76S102G-10UF	10-2 w/ground / 1000	\$	1,683.08
76S103G-5UF	10-3 w/ground / 500	\$	1,164.62
76S103G-10UF	10-3 w/ground / 1000	\$	2,329.23
76S82G-5UF	8-2 w/ground / 500	\$	1,356.92
76S82G-10UF	8-2 w/ground / 1000	\$	2,713.85
76S83G-5UF	8-3 w/ground / 500	\$	1,938.46
76S83G-10UF	8-3 w/ground / 1000	\$	3,876.92
76S62G-5UF	6-2 w/ground / 500	\$	1,866.15
76S62G-10UF	6-2 w/ground / 1000	\$	3,732.31
76S63G-5UF	6-3 w/ground / 500	\$	2,820.00
76S63G-10UF	6-3 w/ground / 1000	\$	5,640.00

Butt Connectors (Stations or Crimp Connectors)



	Wire Size		List Price
74S100-M	#16 - #10	\$	0.83
74S102-M	#8	\$	1.07
74S113-M	#6	\$	2.40
74S103-M	#4	\$	3.84
74S112-M	#2	\$	3.96

Crimping & Cutting Pliers



		List Price
74X103-M	\$	78.00



Electrical & Rubber Tape	Description	List Price
74S104-M1	Economy electrical tape 3/4" x 66'	\$ 2.06
74S104-M	Electrical tape 3/4" x 66'	\$ 4.43
74S101-M	Super 33 brand electrical tape 3/4" x 66'	\$ 13.26
74S105-M	Pipe wrap tape 2" x 100'	\$ 10.95
74S115-M	Rubber splicing tape 1" x 30'	\$ 60.77



Heat Shrink Tubing Kits	Description / Wire Size	List Price
77S121-M	2 wire black / #14 - #10	\$ 3.57
77S120-M	3 wire black / #14 - #10	\$ 3.81
77S119-M	3 wire clear / #14 - #10	\$ 3.93



Heat Shrink Tubing	Description / Size	List Price
77S123-M	Black #14 - #10 wire / 3/8" x 24" long	\$ 6.67
77S122-M	Clear #14 - #10 wire / 3/8" x 24" long	\$ 8.10
77S124-M	Clear #8 wire / 1/2" x 24" long	\$ 12.38
77S125-M	Clear #4 - #6 wire / 1/2" x 24" long	\$ 16.43
77S126-M	Clear #2 wire / 1" x 24" long	\$ 20.24



Pressure Switches	Description / PSI	List Price
80X377-M	Pressure switch pulsation plug w/1/4" FPT / -	\$ 3.26
80X101-M	Economy pressure switch w/1/4" FPT / 20-40	\$ 13.72
80X121-M	Economy pressure switch w/1/4" FPT / 30-50	\$ 18.15
80X131-M	Economy pressure switch w/1/4" FPT / 40-60	\$ 13.72
80X100-M	Square D pressure switch w/1/4" FPT / 20-40	\$ 29.73
80X120-M	Square D pressure switch w/1/4" FPT / 30-50	\$ 29.73
80X130-M	Square D pressure switch w/1/4" MPT / 30-50	\$ 31.02
80X109-M	Square D pressure switch w/1/4" FPT and low pressure cut-off. / 30-50	\$ 39.15
80X140-M	Square D pressure switch w/1/4" FPT / 40-60	\$ 29.73
80X141-M	Square D pressure switch w/1/4" MPT / 40-60	\$ 31.02
80X110-M	Square D pressure switch w/1/4" FPT and low pressure cut-off. / 40-60	\$ 46.61
80X105-M	3HP/230V/1PH, 3HP/115V/3PH, 5HP/230V/3PH, 1HP/460V/3PH / 60-80	\$ 40.83
80X117-M	Square D heavy duty pressure switch 3HP w/1/4" FPT / 30-50	\$ 102.67
80X116-M	Square D heavy duty pressure switch 3HP w/1/4" FPT / 40-60	\$ 98.23
80X118-M	Square D pressure switch w/1/4" FPT usable up to 2HP/115V/1PH, 5HP/460V/1PH, 3HP/115V/3PH, 5HP/230V/3PH, 5HP/460V/3PH / 60-80	\$ 101.20
80X149-M	Mercoid pressure switch with independent adjustment of cut in and cut out settings to within 6 PSI. w/1/4" MPT / 5-150	\$ 819.20



Float Switches	Description	List Price
20PMUWOP	Pumpmaster mechanically activated pump up float switch. Designed to control pumps up to 1/2 Hp 120V and 1 HP 230V. Supplied with 20' length cable and mounting strap, without plug. Listed for potable water.	\$ 91.45
10JSDWOP	Junior super single pump down float switch. Mercury activated, wide angle switch designed to control pumps up to 1/2 HP at 120V and 1 HP at 230V, supplied with 10' length cable and mounting strap, without plug.	\$ 97.82
20JSDWOP	Junior super single pump down float switch. Mercury activated, wide angle switch designed to control pumps up to 1/2HP at 120V and 1 HP at 230V, supplied with 20' length cable and mounting strap, without plug.	\$ 103.14
10JSUWOP	Junior super single pump up float switch. Mercury activated, wide angle switch designed to control pumps up to 1/2 HP at 120V and 1 HP at 230V, supplied with 10' length cable and mounting strap, without plug.	\$ 97.82
20JSUWOP	Junior super single pump up float switch. Mercury activated, wide angle switch designed to control pumps up to 1/2 HP at 120V and 1 HP at 230V, supplied with 20' length cable and mounting strap, without plug.	\$ 109.29
80X210-M	Square D float switch DG-2 for sump applications.	\$ 78.06
80X211-M	Square D heavy duty float switch GG-2 for sump applications.	\$ 149.69



Fused Disconnect Box	Description	List Price
80X234-M	Indoor disconnect box. Round screw-in fuse type fuses not included.	\$ 39.54



Fuses - Round Screw-In	Description	List Price
80X206-M	15 amp time delay fuse	\$ 4.86
80X207-M	20 amp time delay fuse	\$ 4.36
80X208-M	30 amp time delay fuse	\$ 5.35



Circuit Breaker Boxes	Description	List Price
80X235-M	Square D indoor breaker switch box. Breaker not included.	\$ 42.22
80X236-M	Square D outdoor breaker switch box. Breaker not included.	\$ 79.78



Circuit Breakers - 2 Pole

	Description		List Price
80X221-M	Square D 15 amp breaker	\$	22.28
80X222-M	Square D 20 amp breaker	\$	22.28
80X223-M	Square D 30 amp breaker	\$	26.62
80X224-M	Square D 40 amp breaker	\$	24.89
80X226-M	Square D 60 amp breaker	\$	22.28

Disconnect/Circuit Breaker Box Connectors

	Description		List Price
80X155-M	1/2" clamp type romex connector	\$	0.97
80X157-M	3/4" clamp type romex connector	\$	2.14
80X160-M	3/4" hub connector for outdoor breaker boxes	\$	25.97
80X161-M	1" hub connector for outdoor breaker boxes	\$	30.25

Motor Leads

	Description		List Price
86S51-M	4" submersible motor lead 2 wire w/ground, 48" long	\$	31.00
86S48-M	4" submersible motor lead 3 wire w/ground, 48" long	\$	47.00
86S100-M	4" submersible motor lead 3 wire w/ground, 100" long	\$	215.00
86S102-M	6" submersible motor lead 3 wire w/ground, 150" long	\$	249.00

Lightning Arrestors

	Description		List Price
87S100-M	Lightning arrester for single phase installations	\$	155.00
87S102-M	Lightning arrester for three phase installations	\$	266.00

Control Boxes

	Description		List Price
	Submersible motor control box. Available in Webtrol Pump Catalog.		

Solid State Magnetic Starters

	Description		List Price
	Heavy duty starters with class 10 solid state overload. Available in Webtrol Pump Catalog.		

Pump Control Panels

Description

List Price



Pump control panel including nema 3R enclosure, fused disconnect, heavy duty starter with class 10 solid state overloads and hand-off-auto switch. Available in Webtrol Pump Catalog.

Constant Pressure "CP Water" Sub Drive Controllers

Description

List Price



The CP Water Sub Drive series is an innovative drive system that solves what has plagued rural home owners for years, getting city-like water pressure from their wells. Available in Webtrol Pump Catalog.

Pumptec, QD Pumpectec And Pumpectec-Plus

Description

List Price



Pumpectec is a solid state control that monitors motor load and automatically shuts off a single phase motor when the motor load drops below a preset level for a minimum of 4 seconds. Available in Webtrol Pump Catalog.

Motor Protection Devices

Description

List Price



31SM100-M

Symcom model 777 (Up to 240V control voltage)

POR

31SM102-M

Symcom model 777-HVR (Up to 600V control voltage)

POR

31SM104-M

Symcom model 777-KW-HP (Up to 240V control voltage)

POR



31SM106-M

Symcom model 777-HVR-KW-HP (Up to 600V control voltage)

POR

31SM130-M

Symcom model 77C (single phase application)

POR

31SM140-M

Remote monitor For All Symcom model 777 devices. Allows monitoring of the 777 device without accessing the pump panel.

POR

31SM212-M

Model 2DW current transformer 100:5

POR

31SM214-M

Model 2DW current transformer 150:5

POR

31SM216-M

Model 2DW current transformer 200:5

POR

31SM218-M

Model 2DW current transformer 300:5

POR



Single Phase Motor Protection Devices

Description

List Price



31SM311-M

Model 111-Insider for use in 115 Volt 1/3-1/2 HP control boxes

POR

31SM312-M

Model 231-Insider for use in 230 Volt 1/3-1 HP control boxes

POR



Simpson Ohmmeter		Description	List Price
74X104-M		Model no. 372, resistance scales R x 1 to R x 100K	\$ 540.10
74X112-M		Nylon case for Simpson ohmmeter	\$ 145.80



Amprobe Amp/Volt Meter		Description	List Price
74X105-M		Model no. RS-3, volt scales 150/300/600 and amp scales 6/15/40/100/300	POR



Supco Capacitor Meter/Tester		Description	List Price
74X106-M		Tester and vinyl carrying case, microfarad scales .01 to 10 and 10 to 10K	\$ 216.63



Megohmmeter		Description	List Price
74X109-M		AEMC megohmmeter model no. 1015. Resistance scales to 1K megohms using 500 or 1,000 test volts. Includes case, test leads & 1 alligator clip.	POR
74X110-M		Extra alligator clip for model no. 1015 megohmmeter	POR



Submersible Motor Shatt Height Gauge		Description	List Price
APS91-6		4" and 6" motor height gauge	\$ 34.70



Water Test Kit		List Price
64S800-M		POR



Water Softeners		Media volume (Cu. Ft.)	List Price
64S407-M		0.75	POR
64S410-M		1.00	POR
64S415-M		1.50	POR
64S420-M		2.00	POR



Bio-Lite Ultraviolet Sterilizer

	Description	List Price
64S412-M	Bio-Lite ultraviolet sterilizer	POR
64S413-M	Bio-Lite replacement bulb	POR
64S414-M	Bio-Lite replacement quartz sleeve	POR



Chlorinator Chemical Feed Pumps & Accessories

	Description	List Price
89U031-M	UNI-Dose chemical solution feed pump 115V. Capacities to 24 GPD and 80 PSI.	\$ 372.32
89U032-M	UNI-Dose chemical solution feed pump 230V. Capacities to 24 GPD and 80 PSI.	\$ 372.32
89U095-M	UNI-Dose replacement rubber UNI-valve	\$ 6.96
89U063-M	UNI-Dose replacement back pressure valve assembly	\$ 20.40
89U064-M	UNI-Dose replacement foot valve assembly	\$ 51.60
89U030-M	UNI-Dose replacement pump head	\$ 93.60
89U281-M	UNI-Dose chemical solution feed pump rebuild kit	\$ 81.60
15 GAL-TANK	15 Gallon polyethylene chemical solution tank	\$ 131.20
35 GAL-TANK	35 Gallon polyethylene chemical solution tank	\$ 254.40



Pellet Chlorinator

	Description	List Price
64S323-M	ell Pro pellet chlorinator 230V	POR



Chlorine/Well Sanitizer Pellets

	Description	List Price
64S314-M	Well sanitizer pellets 4 lb. container for quick disinfectant when poured in a well.	\$ 40.98
64S316-M	Well Pro chlorinator pellets 3 1/2 lb. container. For use with the Well-Pro pellet chlorinator.	\$ 35.93



Sul-X-Sulfur Removal System

	Description / Media volume (Cu. Ft.)	List Price
64S510-B	Sul-X-Sulfur system with a brass control valve / 1.00	POR
64S520-B	Sul-X-Sulfur system with a brass control valve / 2.00	POR
64S510-N	Sul-X-Sulfur system with a Noryl control valve / 1.00	POR
64S520-N	Sul-X-Sulfur system with a Noryl control valve / 2.00	POR
64S500-M	Sul-X-Sulfur removal solution / 1.00	POR



Aeration Sulfur Removal System

	Description	List Price
64S400-M	Standard Ram-Jet aerator with float 110 volts	POR



Chem-Free Iron Removal System

	Media volume (Cu. Ft.)	List Price
64S710-N	1.00	POR



Automatic Backwash Filters

	Description / Media volume (Cu. Ft.)	List Price
64S610-B	Includes a brass control valve. (10" x 17" x 52") / 1.00	POR
64S615-B	Includes a brass control valve. (10" x 17" x 62") / 1.50	POR
64S615S-B	Includes a brass control valve. (16" x 20" x 39") / 1.50	POR
64S620-B	Includes a brass control valve. (12" x 18" x 57") / 2.00	POR
64S625-B	Includes a brass control valve. (13" x 18" x 63") / 2.50	POR
64S610-N	Includes a Noryl control valve. (10" x 17" x 56") / 1.00	POR
64S615-N	Includes a Noryl control valve. (10" x 17" x 66") / 1.50	POR
64S615S-N	Includes a Noryl control valve. (16" x 20" x 40") / 1.50	POR
64S620-N	Includes a Noryl control valve. (12" x 18" x 60") / 2.00	POR
64S625-N	Includes a Noryl control valve. (13" x 18" x 66") / 2.50	POR



Automatic Backwash Filter Media

	Description / Media volume (Cu. Ft.)	List Price
64S3105-M	Birm for iron removal. Water must be rich in dissolved oxygen. / 0.50	POR
64S3205-M	Activated carbon for taste and odor removal. / 0.50	POR
64S3305-M	Filter-AG for turbidity removal up to 20 micron. / 0.50	POR
64S3405-M	Neutralizer to increase pH. / 0.50	POR
64S3505-M	Greensand for ferrous iron, clear water iron removal and hydrogen sulfide removal to 4 ppm. / 0.50	POR
64S3605-M	Filter sand for precipitated iron and turbidity removal. / 0.50	POR

Water Filter Housings & Wrenches



	Description	List Price
64S102-M	3/4" FPT inlet/outlet clear filter housing accepts up to 2 1/2" dia. x 10" long cartridges.	\$ 72.80
64S103-M	3/4" FPT inlet/outlet Blue filter housing accepts up to 2 1/2" dia. x 10" long cartridges.	\$ 52.59
64S104-M	3/4" FPT inlet/outlet clear filter housing w/bypass valve accepts up to 2 1/2" dia. x 10" long cartridges.	\$ 110.49
64S125-M	Filter wrench for standard housing.	\$ 3.60

Water Filters



	Description	List Price
64S200-M	2 3/8" dia. x 9 7/8" long 25 Micron spun polypropylene filter, sediment filter for flows up to 10 GPM, excellent bacteria and chemical resistance.	\$ 8.75
64S201-M	2 3/8" dia. x 9 7/8" long 20 Micron activated carbon cartridge designed to reduce or eliminate unwanted tastes and odors such as chlorine.	\$ 24.16
64S206-M	2 3/8" dia. x 9 3/4" long 5 Micron taste/odor & sediment cartridge designed to reduce or eliminate unwanted tastes and odors such as chlorine.	\$ 14.77
64S202-M	2 3/8" dia. x 9 7/8" long 30 Micron wound polypropylene cartridge, ideal for sediment reduction including sand, silt, scale & rust.	\$ 4.99
64S204-M	2 3/8" dia. x 9 3/4" long 20 Micron cellulose sediment cartridge sediment filter for flows up to 12 GPM.	\$ 8.74